

BETTE

Baden und Duschen

Enameled Steel Bath and Bath Surround

Installation Recommendations

1. Protect the bath from accidental damage while handling and during installation. Check the enamelled surface carefully on removal of packaging materials prior to installation within 48 hours of receiving the bath.
2. Accurate bath waste set out and installation is essential. Set out the pipe work for the bath and check it's alignment with the waste outlet point before installation.
3. Determine the final position of freestanding bath and surround and mark the outline of the surround onto the floor surface as per the below image;

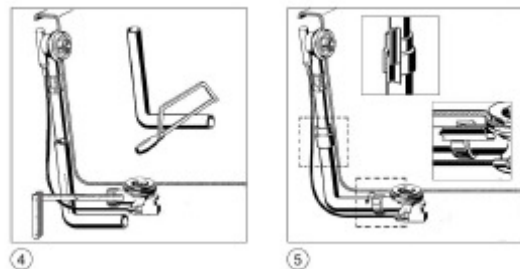


4. With the surround in its position check the top surface of the surround to confirm that the surface is level. Prior to fitting the bath to the surround, the waste and overflow (if applicable) should be connected and the bath feet also fitted (Refer to installation instructions provided with feet).

The bath should be placed onto the surround and the connections to waste outlet pipe checked for alignment as per the below image;



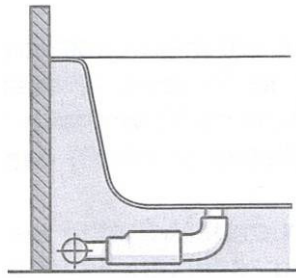
Bath Overflow & Waste Installation Guidelines



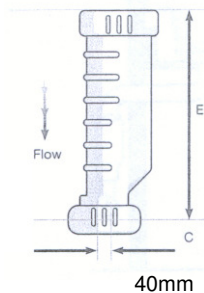
Test that the fitted bath waste is watertight and check that the bath drains fully, prior to completion.

Waste Connection Problem Solving Solutions

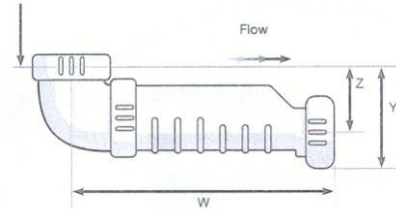
Note: Optional Fittings not supplied with the bath.



Hepvo Waterless Trap 40mm



40mm
Argent Item Number: 970CV40



90 Degree Knuckle Bend 40mm
Argent Item Number: 97040

Dimensions

Size	C	E	W	Z	Y
40mm	6	173	215	35	68

Ensure that the service access panel remains clear of obstructions

5. Prepare the floor surface for installation – ensure floor is clean and void of debris and apply a 6mm – 9mm bead of approved flexible sealant to the outer parameter of the marked surround footprint. Re-position the surround on the floor area.
6. Apply a bead of approved flexible sealant between the side edges of the metal bath and the lip of the bath surround to form water tight joint. Refit the bath to the surround – making the final connection to the drainage point.



7. Clean away all excess sealant from bath edges and surrounds footprint to the floor surface.

IMPORTANT: Local Authorities have varying installation requirements. Check with Authority to confirm prior to final connections.