

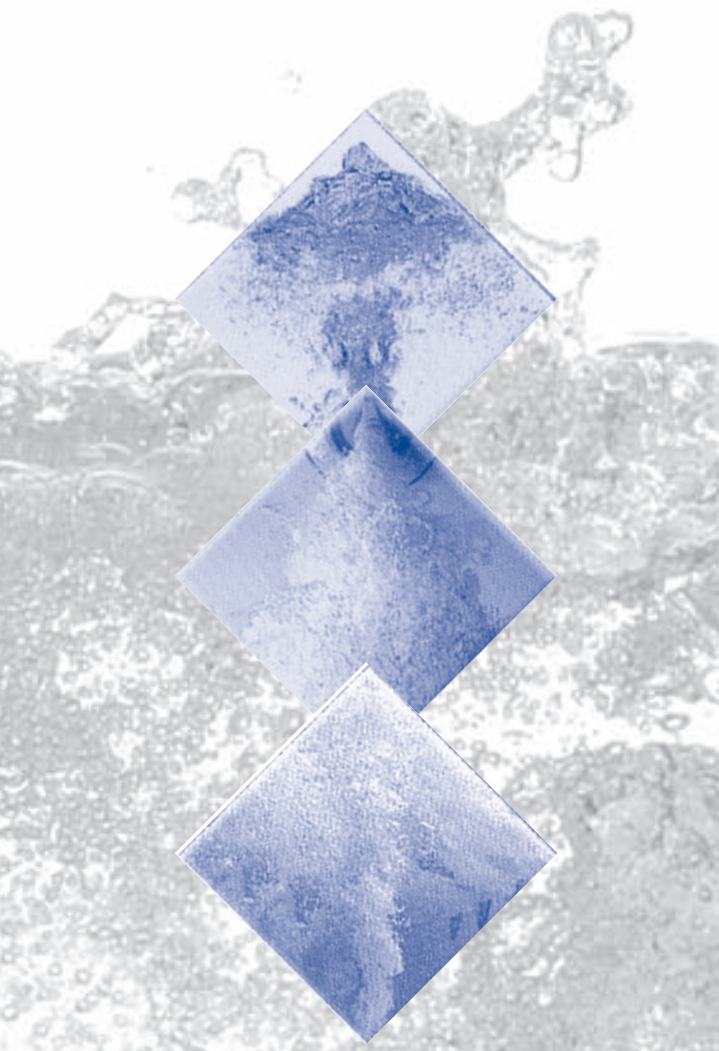


Villeroy & Boch

1748

AVEO FREESTANDING WHISPER WHIRLPOOL™

Fitting • Use



NOTE:

Please keep these instructions in a safe place for future reference.

Contents

Installation Notes	3
1 FITTING	3
1.1 UNPACKING	3
1.2 LIFTING	3
1.3 POSITIONING	4
1.4 CHECKING ROUGH IN DIMENSIONS	4
1.5 FITTING OFF THE WHIRLPOOL	5
1.6 CONNECTING THE DRAIN/OVERFLOW COMBINATION	6
1.7 ELECTRICAL CONNECTION	6
1.8 EARTHING FACILITY	7
1.9 LOWERING THE WHIRLPOOL	7
1.10 AIR SUPPLY	7
1.11 CHECK PRIOR TO TESTING OR OPERATING	7
Consumer Information	8
2. INSTRUCTIONS FOR USE	8
2.1. REMOTE CONTROL	8
2.2 LEGEND	9
2.3 OVERVIEW FUCTIONS REMOTE CONTROL	9
2.4. HYGIENIC CLEANING CYCLE	10
2.5. MAINTENANCE	10
2.6. AIR SUPPLY	11
2.7 CLEANING THE DRAIN (not for Whisper Airpool)	11
2.8. DISASSEMBLY OF THE JETS	11
2.9 REPLACING THE BATTERY IN THE REMOTE CONTROL	12
2.10 REPLACING A HALOGEN LAMP	12
2.11 QUARYL®	13
2.12 MOVING	13
Technical Handling Specifications	13
3. TECHNICAL SPECIFICATIONS	13
Warranty Statement	14

1 FITTING

Note: The Aveo Freestanding whirlpool comes to you packaged in 2 separate packages to maximise ease of installation and to ensure the product is delivered to you in the best possible condition.

1.1 UNPACKING

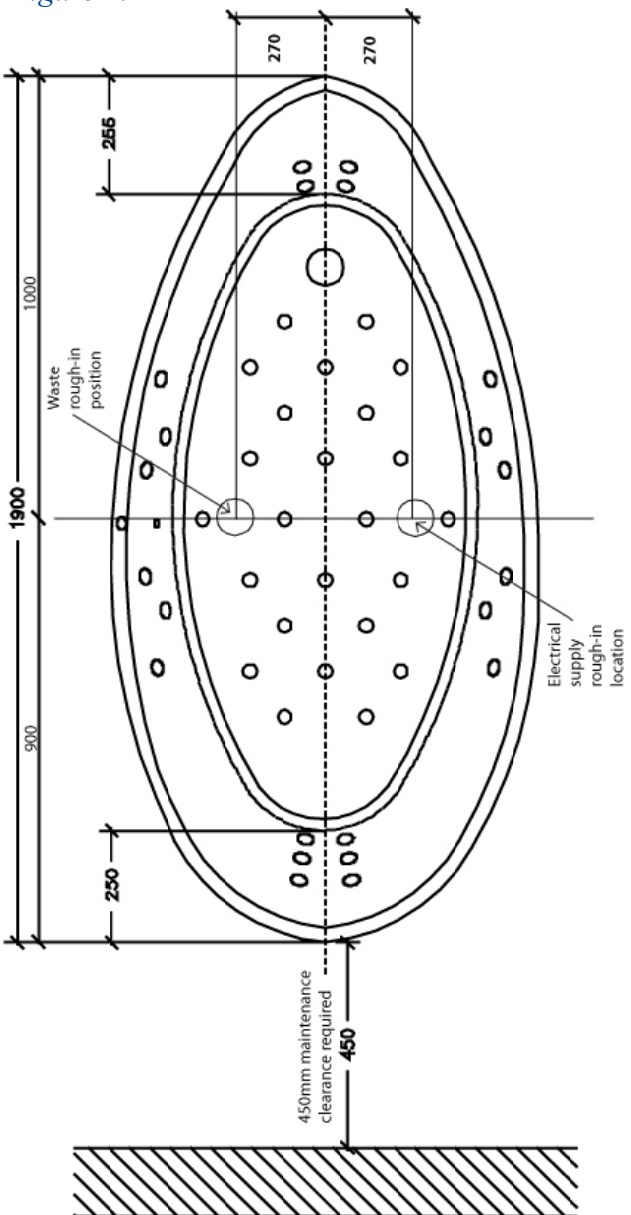
Please check the contents of both cartons with-in 24 hours of receipt, any defects or marks should be reported to your point of purchase with-in this time, failure to do so, may void any claim relative to the warranty for damage. The outer surround is in the box marked “Surround” and the inner whirlpool shell and all working components including the pump/ pumps are in the other box as marked.

1.2 LIFTING

In moving the whirlpool system bath or surround, it should be picked up by the edges of the bath or frame. Never lift up the unit by the air pump, by the pump or by the piping system!

The producer assumes no liability for damage resulting from incorrect transport or incorrect handling.

Figure 1.



1.3 POSITIONING

Remove any unwanted matter from the place where the system bath will be placed (dust, cement remnants, etc.) before positioning the bath. This will prevent damage to the system which could be caused by sucking up / attracting dirt, dust, etc. through the system parts.

Position the system bath surround at the place where it is to be installed. Use a spirit level to make sure everything is perfectly horizontal including the floor area where the freestanding system is to be set.

1.4 CHECKING ROUGH IN DIMENSIONS

Waste rough in detail, (Refer figure 1)

- 40mm DWV pipe is required for rough in; leave 200mm of pipe protruding above the finished floor height, a flexible waste connection including trap is included with the whirlpool. (Use rough-in template supplied for waste location).

Electrical supply rough in detail, (Refer figure 1)

- Use the rough-in template supplied to mark out the electrical supply location, as per figure 1.

- 10amp power supply is required, leave 2 metres of flex protruding above the finished floor height, a junction box is including on the whirlpool frame to enable connection of the power to the whirlpool when required.

Water supply rough in detail

- Water supply rough in detail will vary depending on the spout and tapware selected. Some points to consider are:

- If using a freestanding spout, ensure that there is clearance above and into the top of the whirlpool in the selected location.

- If using wall mounted taps, ensure that the spout selected is of an adequate length and suitable height on the wall to clear the whirlpool while still allowing cleaning clearance between the edge of the whirlpool and the finished wall as prescribed by the local authorities in your area.

Important notes;

All local authorities require a minimum clearance distance between any edge of a freestanding bath/whirlpool and the finished walls. Check with your local authorities for specific clearance information and make sure the clearances observe these dimensions. (As supplied by the local authorities)

450mm Maintenance Access clearance is required opposite the waste end of the whirlpool and between the wall and any non removable obstructions to allow for the hoist mechanism to be activated. (figure 1).

If a freestanding bath filler is being used, ensure you have adequate clearance over the outer edge and into the whirlpool in relation to your bath filler position.

Figure 2.



1.5 FITTING OFF THE WHIRLPOOL

Check that the location where the whirlpool is to be positioned is flat and level and free of all construction debris. Ensure no damage has occurred to any of the waste, electrical or water supply fittings.

Trim the waste pipe to 40mm above the finished floor height in preparation for connection.

Position whirlpool surround making sure it is true and level, once you are happy with the positioning and ensuring there is no fouling of any of the services and that the whirlpool has clearance between the finished walls (as prescribed by the local authorities in your area), silicon the surround into place using a Sikaflex or equivalent quality bathroom grade silicon adhesive.

Some keying of the tiles may be required to aid adhesion.

RAISING THE SCISSOR LIFT

Raise scissor lift/ hoist using your cordless drill, the driver tool is provided. (figure 3) 450mm clearance is required at this end of the whirlpool for activating the maintenance service scissor feed. (The non waste end)

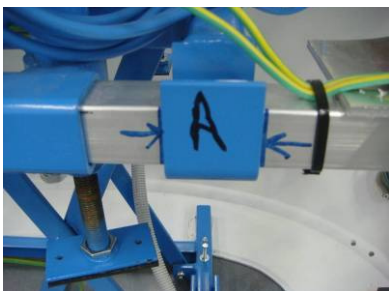
Figure 3.



Locate the whirlpool inner shell onto the raised cradle and line it up with the marks provided on the scissor frame. (Figure 4).

6

Figure 4.



Do not lift by pipework or pumps.

Either adjust or remove the transport feet on the whirlpool so they go all the way up (figure 5), these were used for transport security only and are not functional once the whirlpool is located in the cradle. The whirlpool will not lower all the way down if the feet remain in there transport position.

Figure 5.



1.6 CONNECTING THE DRAIN/OVERFLOW COMBINATION

Trim the DWV waste pipe to 40mm from the finished floor height and connect the pre-assembled flexible waste/ overflow combination supplied to the 40mm DWV waste pipe using solvent cement (figure 6).

Connection of the water supply and drainage may only be carried out by a qualified person.

Figure 6.



1.7 ELECTRICAL CONNECTION

The installation of electrical equipment and any repairs of such equipment must only be done by a recognized installer. The electrical installation and connection must be in accordance with the National Regulatory requirements.

Connect the flex to the socket supplied on the whirlpool frame using a flexible conduit to protect the flex during any movement of the whirlpool.

IMPORTANT:

Mr Electrician, ensure the earth strap is correctly located. Connect the system to the mains. As soon as the system is connected, the display of the temperature indicator will indicate. The system is ready for use.

N.B.: If you switch off the power to the system, you should wait at least 10 seconds before switching the power back on again so as to prevent malfunctions.

This allows the system to re-set.

Means for disconnection must be incorporated in the fixed wiring in accordance with the wiring rules.

1.8 EARTHING FACILITY

On the system's frame there is a connection for the potential bonding. This and all metal components which are not part of the system must be connected to the equipotential bonding that must be present in the bathroom, by means of an equipotential bonding of 4 mm 2 wire flex, as according to the local authority requirements.

1.9 LOWERING THE WHIRLPOOL

Lower the whirlpool using the lowest speed on your drill (figure 7), gently into position taking care when it is close to engaging with the base surround that the clear silicon seal on the surround is aligned.

Figure 7.



When fully lowered, fill the whirlpool with water above the highest jet and test and run it for 15 minutes to ensure all functions are operating.

Go to 1.11 CHECK PRIOR TO TESTING OR OPERATING before commencing this test. See also OPERATING INSTRUCTIONS FOR DETAILS.

Once completed, empty the water out of whirlpool and then raise it to check that there is no evidence of any leaks and that the system is watertight.

Important.

Do not raise whirlpool when there is water in it.

Do not sit or climb into the whirlpool when it is in the raised position.

Do not add water to whirlpool when it is in the raised position.

Failure to observe any of these warnings will result in the voiding of the warranty.

1.10 AIR SUPPLY

For the effective operation of the system, sufficient air should be able to be drawn into the unit. This unit has holes in the housing of the bath surround that must not be sealed or covered at any time.

1.11 CHECK PRIOR TO TESTING OR OPERATING

Although your system was fully tested in the factory before being dispatched, damage may occur during transport or installation. Therefore the following procedure should be carried out after installing the system:

- Check that the bath is clean and free of debris
- Switch on the power to the system. The display of the temperature indicator will indicate.
- Fill the bath with water to well above the jets. The water should be ± 38 °C. The display will indicate the temperature.
- Switch on the system (see the section INSTRUCTIONS FOR USE)
- Now check whether the system functions properly.
- Check all the water seals for possible leaks
- Then put the system into operation for at least 10 minutes and go through all the functions at least once.
- Now check the system again for leaks (pipes, joints and couplings) for at least 10 minutes. Do not let the bath run when empty!
- Aveo whirlpool will have to be drained and raised to check for evidence of leaks.

The producer is not responsible for the consequences of incorrect installation.

Consumer Information

2. INSTRUCTIONS FOR USE

Your system bath is made of high-quality synthetic material. Coloured throughout, and it has a hard, smooth surface.

Please note:

- This appliance is not intended for use by persons with reduced physical, sensory or mental capabilities, or lack of experience or knowledge, unless they have been given supervision or instruction concerning use of the appliance by a person responsible for their safety.
- People who have difficulty with walking or have another handicap must be extra careful when getting in and out!
- Children should be supervised to ensure that they do not play with the appliance.
- Fill the bath with water to 75mm above the jets.

2.1. REMOTE CONTROL

Temperature indicator

When there is no water in the bath, the display of the temperature indicator will indicate. When the bath is filled with water, the temperature of the water will appear on the temperature indicator, thanks to a sensor at the base of the side of the bath. The indicator is also a receiver. It displays the selected massage functions and information about the progress of the cleaning cycle (blow-drying).

The display will start to flash if the water temperature exceeds 40 °C.

2.2 LEGEND



Transmission indicator
(lights up when a symbol is touched)



Controlable turbulence
Controlable air intensity



Air massage
On/off



No function



Water massage + venturi air
Water massage / Water massage + air / OFF

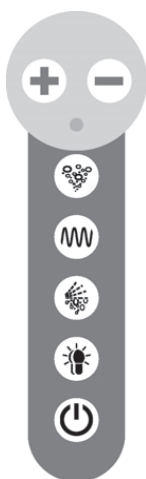


Lighting
On/off



System / cleaning cycle
On/off

2.3 OVERVIEW FUCTIONS REMOTE CONTROL



LEGEND



WHISPER
AIRPOOL

WHISPER
COMBIPOOL

•

•

•

•

•

•

•

•

•

•

•

•

Back/feet jets

(Standard with Whisper Combipool Plus)

The jets can be adjusted manually, in three positions: 'booster', 'bubbling' and 'closed'. For the functions 'booster' and 'bubbling' you can switch on only water or water + air, while the air (optional) is continuously adjustable. In the 'closed' position you switch off the water, thus increasing the supply from the other jets.

IMPORTANT NOTE

2.4. HYGIENIC CLEANING CYCLE

The system bath is equipped with a cleaning system that goes into operation automatically after the bath has emptied. After the waiting period of 12 minutes, the cleaning cycle starts and lasts nearly 6 minutes. During the cycle the system pipes are blown dry. The display of the temperature indicator will indicate the elapsing of the cleaning time.

The cleaning cycle will also be activated after taking a 'regular' bath (without using the system).

Note: The waiting period and the cleaning cycle can be interrupted and by-passed by touching symbol on the remote control. The system then returns to the stand-by mode. Waiting period and cleaning cycle are also interrupted and by-passed when the water level again rises (sufficiently) above the jets. The system can then be put into operation again.

Manual operation cleaning cycle

The cleaning cycle can also be operated by hand when you have not used the bath. This can be done by touching O symbol once. This could be desirable if you have showered in the bath or if something else has caused water to come into the system.

During the cleaning cycle the discharge/waste should be opened. Should you have started the manual cleaning cycle by accident you can deactivate the cycle by touching O symbol again.

2.5. MAINTENANCE

Little or no dirt at all can lodge on the non-porous surface of the bath, so that maintenance is limited to wiping it with a wet cloth or sponge. If you use bath-oil or bath-foam, the bath can be cleaned with a soft soap and clean water. Never use scouring agents!

NOTE: We recommend rinsing the system once a month with baking soda, in particular when you use bath oil.

This should be done as follows:

Fill the bath to normal water height. Add approx. 500 grams of baking soda dissolved in warm water. Run the system for 10 minutes. Switch off the system and wait for 10 minutes. Switch the system on again and run the system for another 10 minutes. Let the water run out of the bath. Rinse the visible parts (jets, etc.) thoroughly.

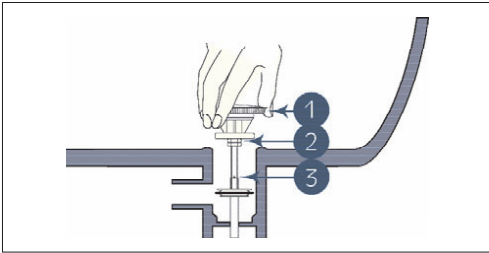
2.6. AIR SUPPLY

It must be possible for air to be drawn in sufficiently for the correct operation of the system bath by means of the holes in the bottom of the surround. Make sure that nothing, such as a towel for example, is covering or obstructing these holes whilst bathing.

2.7 CLEANING THE DRAIN (not for Whisper Airpool)

System baths are equipped with a special protective drain cover. If the openings in the drain cover close up during use, e.g., through dirt or because you are sitting on it, water circulation is deactivated. In this case you should switch off the bath for 1 minute and, if necessary, clean the drain. Then set the bath into operation again. To remove dirt, the drain cover can be lifted away from the drain hole so that the upper chamber of the drain can be cleaned

Figure 8.

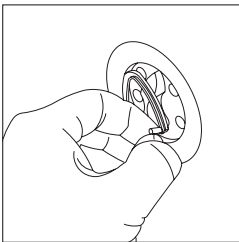


2.8. DISASSEMBLY OF THE JETS

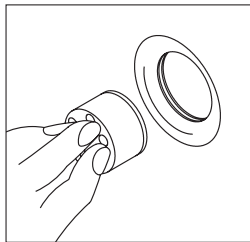
The jets can be dismantled as required.

In case your bath is provided with back/feet jets, (see figures 9 and 10). Remove the safety ring from the jet. Then remove the jet. In case your bath is provided with side jets, (see figures 11 and 12).

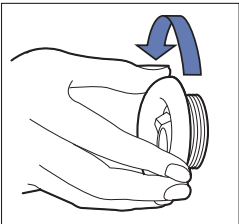
Figure 9-12.



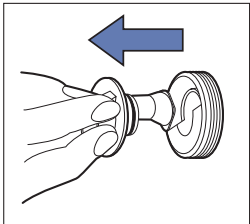
9



10



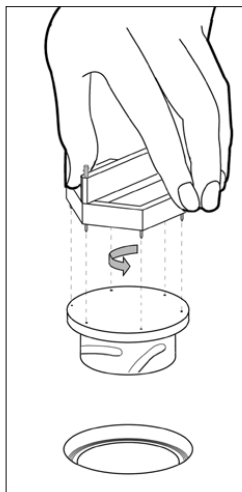
11



12

In case your bath is provided with bottom jets (AIRSTONE'S) they can be removed for cleaning. You can turn them loose by using the key supplied (figure 12). NOTE: The AIRSTONE'S are dishwasher safe.

Figure 13.



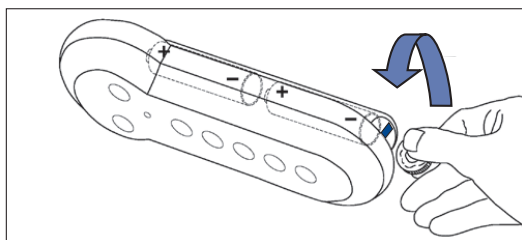
2.9 REPLACING THE BATTERY IN THE REMOTE CONTROL

When the remote control batteries begin to fail, the distance at which the receiver responds to signals from the remote control becomes increasingly smaller. The remote control will indicate on the screen that the batteries are almost empty.

To replace the batteries, remove the cover on the front of the remote control by using a coin to loosen the screw on the cap (turning anticlockwise).

After replacing the batteries, retighten the screw on the cover (figure 14). Do this with care and do not damage the sealing ring. Suitable batteries (AAA type) for the remote control are the following: Alkaline 1.5V; Duracell AAA, or similar brands.

Figure 14.

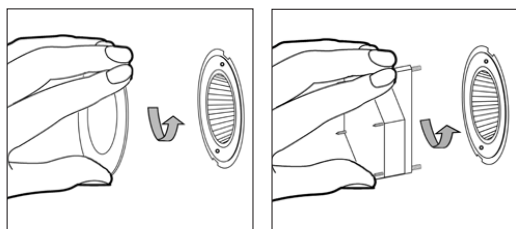


2.10 REPLACING A HALOGEN LAMP

(If the underwater lighting is fitted)

In case your bath is provided with Quarryl Unique lighting (figure 14a + 14b) you can disassemble it, with the key supplied.

Before replacing a halogen lamp switch off the power to the system by means of the cut-off switch.



To replace a halogen bulb, the following procedure should be followed.

1. Remove ring 1 by turning it to the left.
2. Remove the flange and glass.
3. Change the lamp. Take care: never touch the halogen bulb with the bare fingers.
4. Repeat the above actions (1, 2) in reverse order.

Note: Spotlights have a 20 Watt, 12 Volt lamps. These lamps are available from your electrician and at specialised lighting shops.

2.11 QUARYL®

Quaryl® baths easily withstand all normal non-abrasive cleaning detergents used in the household without the surface of the Quaryl® bath being affected.

2.12 MOVING

If you move house, please pass on this document to the new owners of the system bath. We will be pleased to send you our latest literature under these circumstances.

Technical Handling Specifications

3. TECHNICAL SPECIFICATIONS

1. ELECTRICAL SYSTEM

- Degree of protection IPX5
- Class I
- Power supply 230 V, 50 Hz
- Total absorbed power Whisper Airpool 0,15 kW, Whisper Combipool Plus 2,4kW

2. AIR PUMP (Whisper Airpool, Whisper Combipool Plus)

- 220 / 230 V, 30 W

3. PUMP (Whisper Combipool Plus)

- 230 V, 50 Hz, 0, 85 kW

- Internal thermal safety

4. MINIMUM LEVEL SAFETY

- Also overheating protection for the pump
- Built in as a standard feature

- Electronically controlled

5. CONTROL UNIT HANDHELD REMOTE

- Controlled by a microprocessor
- Power supply with a safety transformer

6. QUALITY CONTROL

- The system is thoroughly tested in the factory before delivery
- The entire system complies with the EMC and safety standards

The producer reserves the right to implement changes and improvements in the production of system baths without prior announcement.

Warranty Statement

The Whisper Whirlpool systems have a 24-month limited warranty from the date of purchase. Villeroy & Boch Quaryl baths come with a 10-year warranty. This warranty covers: factory faults, changes in colour and/or cracks resulting from material ageing and distortions caused by hot water. (not in excess of 80 degrees Celsius)

The guarantee is only valid if the product was installed in accordance with our installation/maintenance terms and conditions, and with exception of necessary drainage/overflow provision, has not been provided with a system developed or fitted by third parties and has not been subjected to modification (e.g. the drilling of holes) which are not indicated in the installation provisions accompanying the product. To claim against the guarantee please contact your dealer.

Consequential damages and the cost of building-in or removing elements are not covered by the guarantee.

