



Villeroy & Boch

1748

WHISPER AIRPOOL™
WHISPER WHIRLPOOL™
WHISPER COMBIPOOL™
WHISPER COMBIPOOL PLUS™

Fitting • Use



NOTE:

Please keep these instructions in a safe place for future reference.

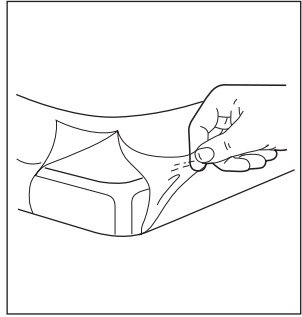
Installation Notes

1. FITTING

NOTE: A system bath is installed at a greater height than a 'normal' bath due to the addition of frame and adjustable legs.

1.1 UNPACKING (figure 1)

To prevent damage during transport and installation, the edges of the system baths are provided with protective tape before the bath is enveloped in shrink-wrap and packed in a sturdy cardboard box or wooden crate.



1

Unpack the system bath and remove the tape. Make sure the bath is undamaged before installing it.

1.2 LIFTING

In moving the system bath, it should only be picked up by the edges of the bath or the frame.

Never lift up the unit by the air pump, by the pump or by the piping system!

The producer assumes no liability for damage resulting from incorrect transport or incorrect handling.

1.3 POSITIONING

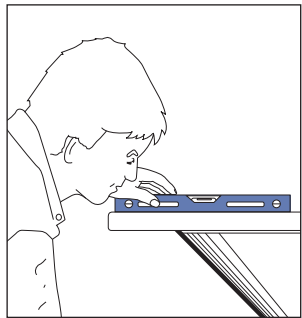
Remove any unwanted matter from the place where the system bath will be placed (dust, cement remnants, etc.) before positioning the bath. This will prevent damage to the system which could be caused by sucking up / attracting dirt, dust, etc. through the system parts.

Position the system bath at the place where it is to be installed. Use a spirit level to make sure everything is perfectly horizontal. The spirit level should be set on the edge of the bath, not on the bottom! (figure 2).

Check that all legs stand firmly on the floor. If needed, adjust them.

All electrical equipment, e.g. supply switch, wiring, etc., should be installed a minimum of 20 mm from the supporting surface beneath the appliance.

Unit is supplied with approximate 1.8 metres of 3-core electrical flex cable for installation.



2

NOTE: If your system BATH is supplied with a HEATER then a 15 amp power point is required.

1.4 CONNECTING THE WATER SUPPLY AND DRAIN/OVERFLOW COMBINATION

Connect the pre-assembled drain/overflow combination to the drain and then check for watertightness. Connection of the water supply and drainage may only be carried out by a qualified person.

1.5 ELECTRICAL CONNECTION

The installation of electrical equipment and any repairs of such equipment must only be done by a recognized installer. The electrical installation and connection must be in accordance with the National Regulatory requirements.

Connect the system to the mains. As soon as the system is connected, the display of the temperature indicator will indicate \square . The system is ready for use.

N.B.: If you switch off the power to the system, you should wait at least 10 seconds before switching the power back on again so as to prevent malfunctions. This allows the system to re-set.

1. Means for disconnection must be incorporated in the fixed wiring in accordance with the wiring rules, via three pin plug set.

1.6 EARTHING FACILITY

On the system's frame there is a connection for the potential bonding. This and all metal components which are not part of the system must be connected to the equipotential bonding that must be present in the

bathroom, by means of an equipotential bonding of 4 mm² wire, according to the local current requirements.

IMPORTANT NOTE

1.7 AIR SUPPLY

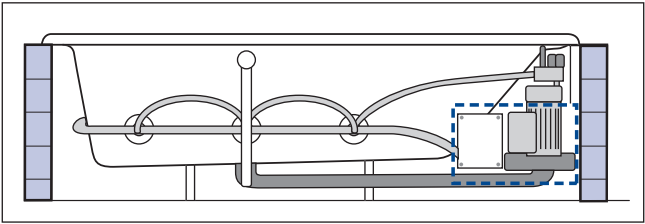
For the effective operation of the system, sufficient air should be able to be drawn into the unit. If this is not possible (at the rear side of the bath, for example), the housing of the bath should be provided with air gaps or a grid with a minimum capacity of 40 cm².

If a grid is mounted in the bathroom, it has to meet the splashproof requirements and should only be removable using tools. The grid or air gaps should always be kept free of towels, etc., while bathing.

Failure to provide a service access panel and air ventilation violates the manufacturers installation requirements.

1.8 SUPPORT/CASING ACCESS

The technical parts of the system bath should remain accessible via a service access panel (figure 3). Consequently the access panel should be completely removable. This panel should only be opened whilst Whisper Whirlpool is not in operation.



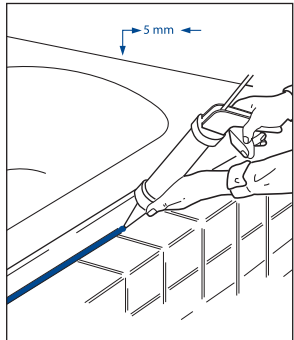
3

Tiling Strip

1.9 FINISHING

You should use a silicon compound in the joints, creating a watertight, permanently elastic finishing joint. This joint allows the material to settle. Before making the joint, read the instructions on the silicon compound container - the use of tiling strip to flash the bath edge to contact with wall edges is recommended.

When installing the system bath in a niche and/or finishing with a horizontal row of tiles which extend partially under the edge of the bath, the joint (a minimum of 4 to 5 mm) between the edge of the bath and the row of tiles should likewise be sealed with silicon compound (figure 4).



4

NOTE: Make sure that no cement particles, pieces of silicon glue etc. fall into the jets or into the piping system. It will be virtually impossible to remove them!

1.10 CHECK PRIOR TO BUILDING & SHEETING IN

Although your system was fully tested in the factory before being dispatched, damage may occur during transport or installation. Therefore the following procedure should be carried out after installing the system:

- Check whether the bath is clean
- Switch on the power to the system. The display of the temperature indicator will indicate \square .
- Fill the bath with water to well above the jets. The water should be ± 38 °C. The display will indicate the temperature
- Switch on the system (see the section **INSTRUCTIONS FOR USE**)
- Now check whether the system functions properly
- Check all the water seals for possible leaks
- Then put the system into operation for at least 10 minutes and go through all the functions at least once
- Now check the system again for leaks (pipes, joints and couplings) for at least 10 minutes. Do not let the bath run empty!

The producer is not responsible for the consequences of incorrect installation.

Consumer Information

2. INSTRUCTIONS FOR USE

Your system bath is made of high-quality synthetic material. Coloured throughout, and it has a hard, smooth surface.

Please note:

- This appliance is not intended for use by persons with reduced physical, sensory or mental capabilities, or lack of experience or knowledge, unless they have been given supervision or instruction concerning use of the appliance by a person responsible for their safety.
- People who have difficulty with walking or have another handicap must be extra careful when getting in and out!
- Children should be supervised to ensure that they do not play with the appliance.
- Fill the bath with water to 75mm above the jets.

2.1. REMOTE CONTROL

Temperature indicator

When there is no water in the bath, the display of the temperature indicator will indicate □. When the bath is filled with water, the temperature of the water will appear on the temperature indicator, thanks to a sensor at the base of the side of the bath. The indicator is also a receiver. It displays the selected massage functions and information about the progress of the cleaning cycle (blow-drying).

The display will start to flash if the water temperature exceeds 40 °C.

2.2 LEGEND



Transmission indicator

(lights up when a symbol is touched)



Controlable turbulence

Controlable air intensity



Air massage

On/off



No function



Water massage + venturi air

Water massage / Water massage + air / OFF



Lighting

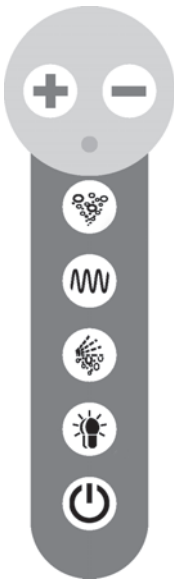
On/off



System / cleaning cycle

On/off

2.3. OVERVIEW FUNCTIONS RIM CONTROL
REMOTE CONTROL



LEGEND	WHISPER AIRPOOL	WHISPER WHIRLPOOL	WHISPER COMBIPOOL	WHISPER COMBIPOOL PLUS
	•	•	•	•
	•		•	•
	•		•	•
	•		•	•
		•	•	•
			•	•
	•		•	•

Back/feet jets

(Standard for Whisper Combipool Plus)

The jets can be adjusted manually, in three positions: ‘booster’, ‘bubbling’ and ‘closed’. For the functions ‘booster’ and ‘bubbling’ you can switch on only water or water + air, while the air (optional) is continuously adjustable. In the ‘closed’ position you switch off the water, thus increasing the supply from the other jets.

Heater

(Optional for Whisper Whirlpool, Whisper Combipool and Whisper Combipool Plus)

The heater will switch on automatically when the water massage is on and switch off automatically when the water massage is off. The heater is supplied with a thermostat that regulates the temperature of the bath water on approx. 38°C (factory setting). Don’t use salt and extremely dirty water in the bath, to avoid problems with the heater.

IMPORTANT NOTE

2.4. HYGIENIC CLEANING CYCLE

(Only on Whisper Airpool, Whisper Combipool and Whisper Combipool Plus)

The system bath is equipped with a cleaning system that goes into operation automatically after the bath has emptied. After the waiting period of 12 minutes, the cleaning cycle starts and lasts nearly 6 minutes. During the cycle the system pipes are blown dry. The display of the temperature indicator will indicate the elapsing of the cleaning time.

The cleaning cycle will also be activated after taking a 'regular' bath (without using the system).

Note: The waiting period and the cleaning cycle can be interrupted and by-passed by touching symbol ☺ on the remote control. The system then returns to the stand-by mode. Waiting period and cleaning cycle are also interrupted and by-passed when the water level again rises (sufficiently) above the jets. The system can then be put into operation again.

Manual operation cleaning cycle

The cleaning cycle can also be operated by hand when you have not used the bath. This can be done by touching symbol ☺ once. This could be desirable if you have showered in the bath or if something else has caused water to come into the system.

During the cleaning cycle the discharge should be opened. Should you have started the manual cleaning cycle by accident you can deactivate the cycle by touching symbol ☺ again.

2.5. MAINTENANCE

Little or no dirt at all can lodge on the non-porous surface of the bath, so that maintenance is limited to wiping it with a wet cloth or sponge. If you use bath-oil or bath-foam, the bath can be cleaned with a soft soap and clean water. Never use scouring agents (figures 5 and 6)!

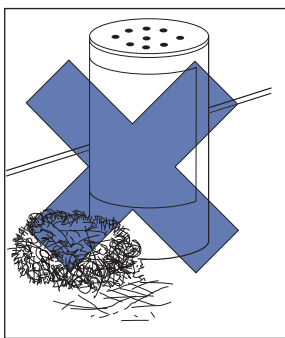
NOTE: We recommend rinsing the system once a month with soda, in particular when you use bath oil. This should be done as follows: Fill the bath to normal water height. Add approx. 500 grams of soda dissolved in warm water. Run the system for 10 minutes. Switch off the system and wait for 10 minutes. Switch the system on again and run the system for another 10 minutes. Let the water run out of the bath. Rinse the visible parts (jets, etc.) thoroughly.

2.6. AIR SUPPLY

It must be possible for air to be drawn in sufficiently for the correct operation of the system bath by means of a grill or vents. Make sure that nothing, such as a towel for example, is covering or obstructing the grill or



5



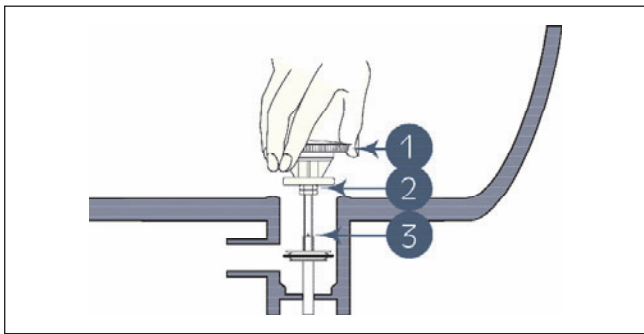
6

the vent whilst bathing.

2.7 CLEANING THE DRAIN (not for Whisper Airpool)

System baths are equipped with a specially protective drain cover. If the openings in the drain cover close up during use, e.g., through dirt or because you are sitting on it, water circulation is deactivated. In this case you should switch off the bath for 1 minute and, if necessary, clean the drain. Then set the bath into operation again.

To remove dirt, the drain cover can be lifted away from the drain hole so that the upper chamber of the drain can be cleaned (figure 7).



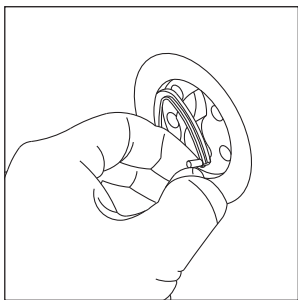
7

2.8. DISASSEMBLY OF THE JETS

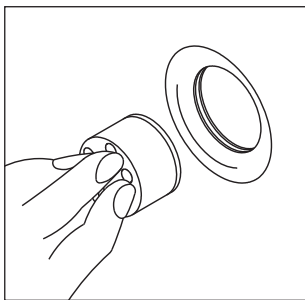
The jets can be dismantled if desired.

In case your bath is provided with back/feet jets, (see figures 8 and 9).
Remove the safety ring from the jet. Then remove the jet.

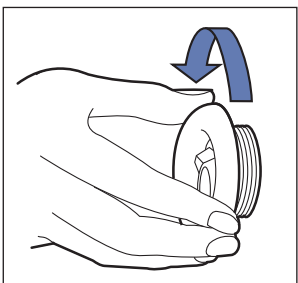
In case your bath is provided with side jets, (see figures 10 and 11).



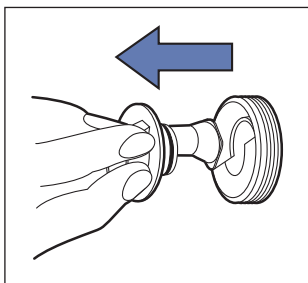
8



9



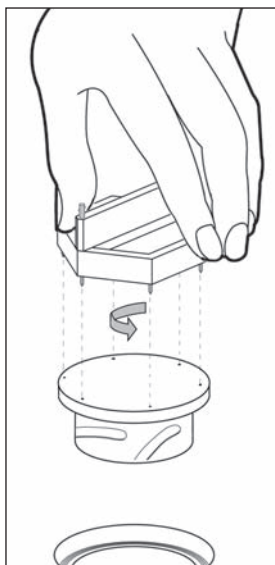
10



11

In case your bath is provided with bottom jets (AIRSTONE'S) and remove for cleaning. You can turn them loose by using the key supplied (figure 12).

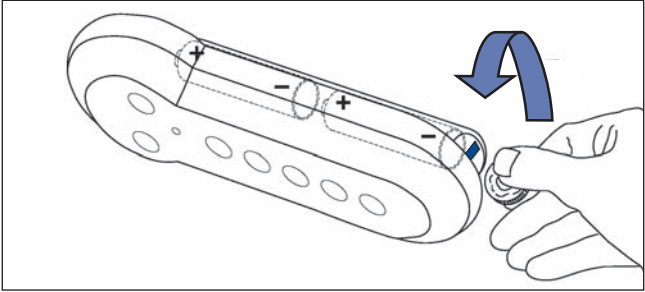
NOTE: The AIRSTONE'S are dishwasher safe.



12

2.9 REPLACING THE BATTERY IN THE REMOTE CONTROL

When the remote control batteries begin to fail, the distance at which the receiver responds to signals from the remote control becomes increasingly smaller. The remote control will indicate on the screen that the batteries are almost empty. To replace the batteries, remove the cover on the front of the remote control by using a coin to loosen the screw on the cap (turning anti-clockwise). After replacing the batteries, retighten the screw on the cover (figure 13). Do this with care and do not damage the sealing ring. Suitable batteries (AAA type) for the remote control are the following: Alkaline 1.5 V; Duracell AAA, or similar brands.



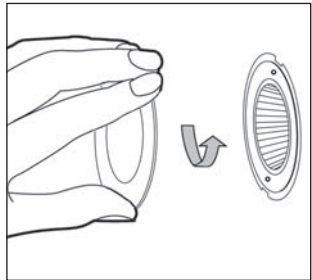
13

2.10 REPLACING A HALOGEN LAMP (if the underwater lighting is fitted)

In case your bath is provided with Quaryl Unique lighting (figure 14a + 14b) you can disassemble it, with the key supplied.

Before replacing a halogen lamp switch off the power to the system by means of the cut-off switch. To replace a halogen bulb, the following procedure should be followed.

1. Remove ring 1 by turning it to the left.
2. Remove the flange and glass.
3. Change the lamp. Take care: never touch the halogen bulb with the bare fingers.
4. Repeat the above actions (1, 2) in reverse order.

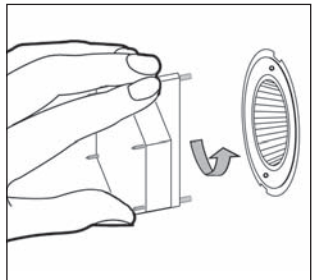


14a

Note: Spotlights have a 20 Watt, 12 Volt lamps. These lamps are available from your electrician and at specialised lighting shops.

2.11 QUARYL®

Quaryl® baths easily withstand all normal non-abrasive cleaning detergents used in the household without the surface of the Quaryl® bath being affected.



14b

2.12 MOVING

If you move house, please pass on this document to the new owners of the system bath. We will be pleased to send you our latest literature under these circumstances.

Technical Handling Specifications

3. TECHNICAL SPECIFICATIONS

1. ELECTRICAL SYSTEM

- Degree of protection IPX5
- Class I
- Power supply 230 V, 50 Hz
- Total absorbed power
Whisper Airpool 0,15 kW,
Whisper Whirlpool 2,3 kW,
Whisper Combipool 2,4 kW
Whisper Combipool Plus 2,4kW

2. AIR PUMP (Whisper Airpool, Whisper Whirlpool, Whisper Combipool, Whisper Combipool Plus)

- 220 / 230 V, 30 W

3. PUMP (Whisper Whirlpool, Whisper Combipool, Whisper Combipool Plus)

- 230 V, 50 Hz, 0,85 kW
- Internal thermal safety

4. HEATER

- 230 V, 50 Hz, 1,5 kW
- Internal thermal safety

5. MINIMUM LEVEL SAFETY

- Also overheating protection for the pump and heater
- Built in as a standard feature
- Electronically controlled

6. CONTROL UNIT HANDHELD REMOTE OR

RIM MOUNTED CONTROL

- Controlled by a microprocessor
- Power supply with a safety transformer

7. QUALITY CONTROL

- The system is thoroughly tested in the factory before delivery
- The entire system complies with the EMC and safety standards

The producer reserves the right to implement changes and improvements in the production of system baths without prior announcement.

Warranty Statement

The Whisper Whirlpool systems have a 18-month limited warranty from the date of purchase. Villeroy & Boch Quaryl baths come with a 10-year warranty. This warranty covers: factory faults, changes in colour and/or cracks resulting from material ageing and distortions caused by hot water. The guarantee is only valid if the product was installed in accordance with our installation/maintenance terms and conditions, and with exception of necessary drainage/overflow provision, has not been provided with a system developed or fitted by third parties and has not been subjected to modification (e.g. the drilling of holes) which are not indicated in the installation provisions accompanying the product. To claim against the guarantee please contact your dealer.

Consequential damages and the cost of building-in or removing elements are not covered by the guarantee.

Information:



Argent Australia Pty. Ltd.
18 Wandoo Street (PO Box 2093)
Fortitude Valley Qld 4006
Australia

Toll Free Number: 1300 364 748
Website: www.argentaust.com.au