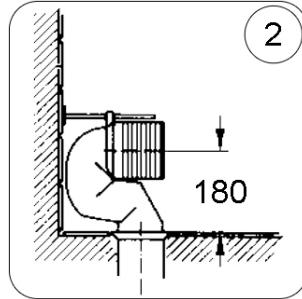
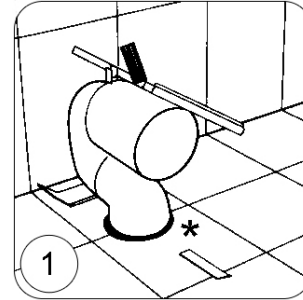


Position Bend in floor
* N.B. Pan Collar needs to be flush with floor when using model 8702. Discard fluted seal

8702, 8712

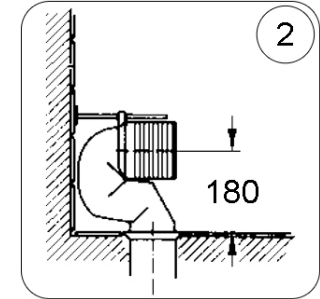


N.B. Confirm centre of Vario Bend conforms to Pan outlet centre.

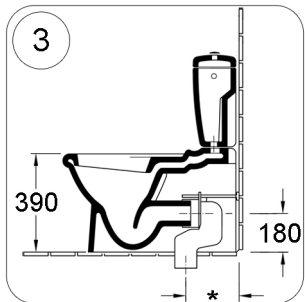


Position Bend in floor
* N.B. Pan Collar needs to be flush with floor when using model 8702. Discard fluted seal

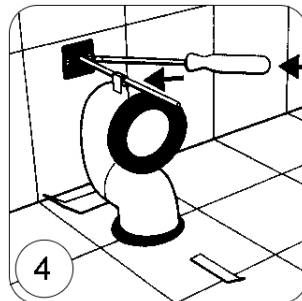
8702, 8712



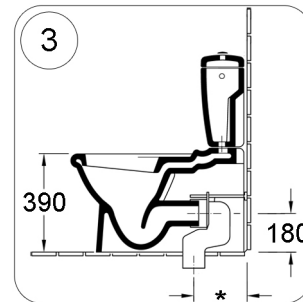
N.B. Confirm centre of Vario Bend conforms to Pan outlet centre.



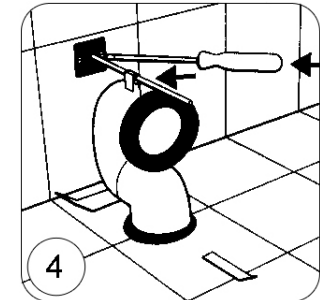
Confirm distance from finished wall to Pan Outlet spigot (i.e. 210mm)
*Add 25mm to that measurement



Re check measurements; Vario bend -see FIG 3. Fix Brace
Cut Vario bend (i.e.210+25mm)
Fit Sealing Rubber to front of Vario Bend and install.



Confirm distance from finished wall to Pan Outlet spigot (i.e. 210mm)
*Add 25mm to that measurement



Re check measurements; Vario bend -see FIG 3. Fix Brace
Cut Vario bend (i.e.210+25mm)
Fit Sealing Rubber to front of Vario Bend and install.

Vario Bends: models



Technical Advice Hotline 1800 356 717

Vario Bends: models



Technical Advice Hotline 1800 356 717