

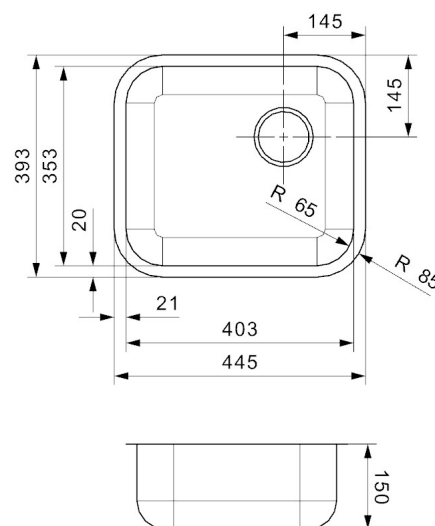


PWD KING MAIN BOWL

Product Image



Technical Specification



Description

PWD KING MAIN BOWL

R31711 No Taphole

Additional Information

- AS1428.2 Compliant
- Underneath Insulated
- No overflow
- 304 Stainless steel Polish INOX finish
- Top mount installation
- 19 Litre Capacity
- Suit 500 Carcass

INSTALLATION DISCLAIMER

ALL TEMPLATES, LINE DRAWINGS & ELECTRONIC FILES ARE SUPPLIED AS A GUIDE ONLY. PLEASE CROSS CHECK WITH ACTUAL BOWL BEFORE COMMENCING ANY CUTOUT AND ENSURE RADII ARE SUITABLE TO BENCHTOP MATERIAL TOLERANCES. ARGENT ACCEPTS NO RESPONSIBILITY FOR CUTOUT ERRORS.

SINKS WITH OVERFLOWS WILL NEED ALLOWANCE IN BENCHTOPS WHEN TOP MOUNTING – PLEASE CROSS CHECK WITH ACTUAL BOWL TO ASSIST