



Argent Smart Mirror
Installation / Operation
Manual



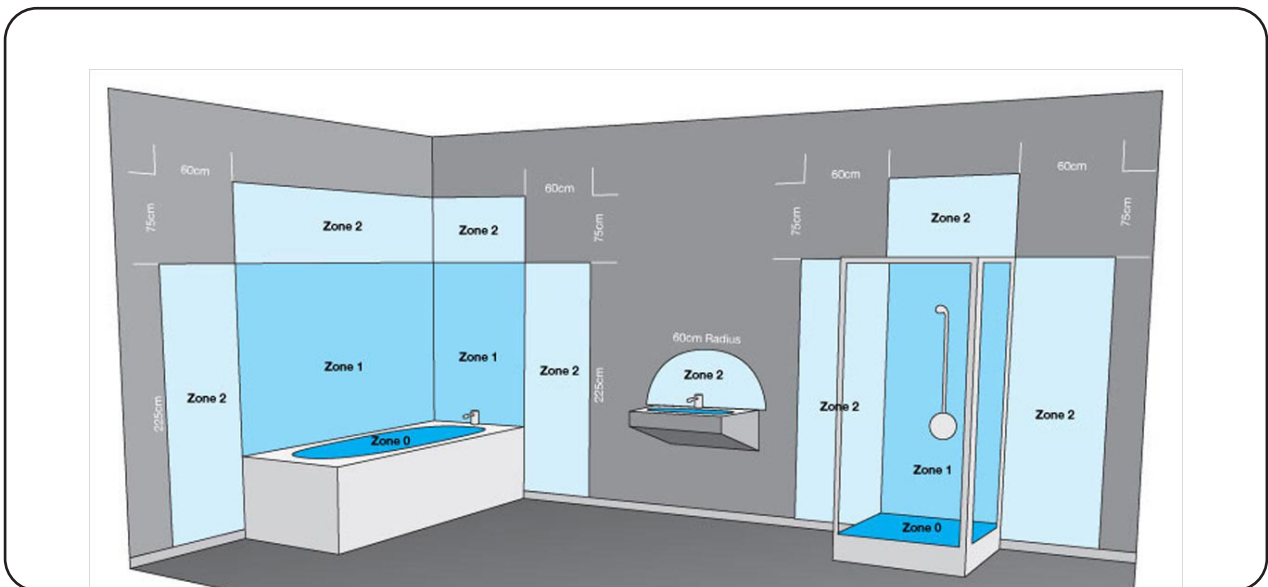
Table of Contents

Installation Instructions.....	3
General Information.....	3
Input / Output Info.....	3
Fitting Instructions.....	4
Operation Manual.....	5
Button Controls.....	5
Bluetooth Models.....	5
Non-Bluetooth Models.....	5
Connecting to Bluetooth Speakers.....	6
Cleaning & Care.....	7
Customer Support.....	8

Installation Instructions

General Information

- This Argent Smart Mirror is suitable for Zone 2 or higher and not Zone 0 or 1 (see diagram below).
- A qualified electrician should be consulted before installing the Argent Smart Mirror.
- Switch off electrical supply at mains before fitting.
- Ensure wall surface is of suitable strength and construction.
- Beware of hidden cables or pipes.
- For plasterboard walls, specialist fixings should be purchased from a DIY or hardware store.
- The Argent Smart Mirror is heavy, use assistance when lifting.
- The light source of this luminaire is not replaceable; when the light source reaches it's end of life the whole luminaire shall be replaced.
- This appliance is not intended for use by persons (including children) with reduced physical, sensory or mental capabilities, or lack of experience and knowledge, unless they have been given supervision or instruction concerning use of the appliance by a person responsible for their safety.
- Children should be supervised to ensure that they do not play with the appliance.



Input / Output Info

Hardwired Connection
Input 110V-240V 50/60HZ
Output 12V DC 60W

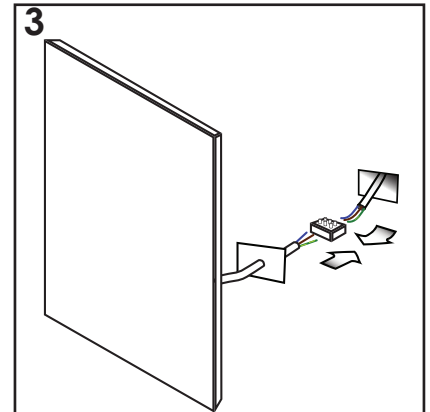
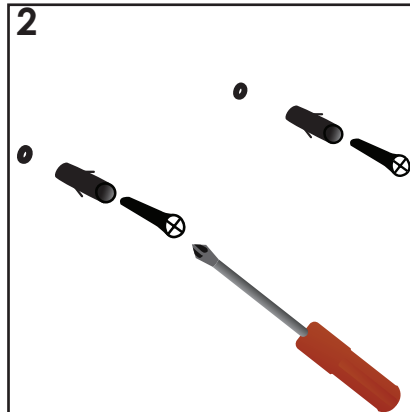
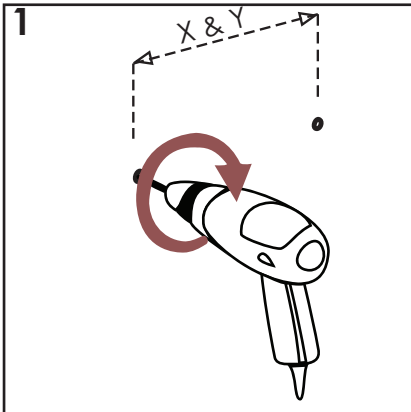
Caution, risk of electric shock



Ensure this Installation / Operation manual is left for owner.

Installation Instructions

Fitting Instructions



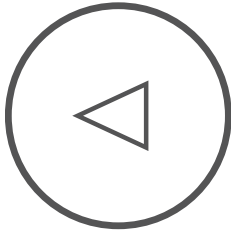
1. Handle Argent Smart Mirror with care. When unpacked, never place Argent Smart Mirror upright on a hard surface e.g. Tile floor. Always lay on soft surface.
2. Drill 2 holes on wall surface as per diagram 1 (above) to desired height. Use spirit level to ensure holes are level. If drilling through tiles, use a diamond drill bit.
3. Inset wall plugs into holes and screws into holes as per diagram 2 (above). Screw Head to sit proud of the wall for Argent Smart Mirror to hook onto.
4. Attach wire from back of Argent Smart Mirror to mains wire in accordance with current IEE regulations as per diagram 3 (above). A second person will be needed to hold the Argent Smart Mirror in place.
5. Hang the Argent Smart Mirror onto the screws via holes in the frame.



Operation Manual

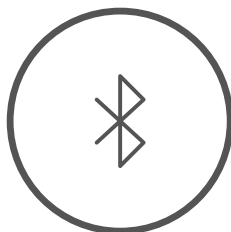
Button Controls

Bluetooth Models



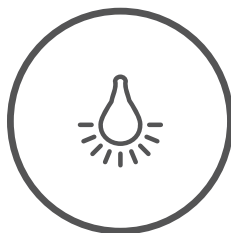
TAP FUNCTION - Play the next / previous auditory media on a playlist / audio library

HOLD FUNCTION - Increase / decrease the speaker volume



TAP FUNCTION - Pause / Play auditory media

HOLD FUNCTION - Connect Device (Page 6)



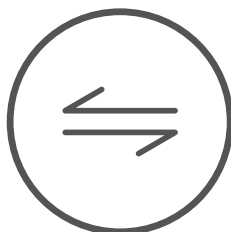
TAP FUNCTION - Cycle between No Light, Warm Light, Neutral White Light, or Cool Light

HOLD FUNCTION - Increase / Decrease brightness of selected light



TAP FUNCTION - Toggle Demister Pad on or off

Non-Bluetooth Models



TAP FUNCTION - Cycle between No Light, Warm Light, Neutral White Light, or Cool Light

HOLD FUNCTION - Increase / Decrease brightness of selected light



TAP FUNCTION - Toggle Demister Pad on or off

Operation Manual

Connecting to Bluetooth Speakers*

*Bluetooth Models Only

1. Press and hold the Bluetooth Function on the mirror for 5 seconds. It should beep and begin flashing.
2. On your device, find your Argent Smart Mirror called "ROYOHO W8009CT" in bluetooth settings. You should here a beep from the mirror signifying that you have succesfully connected your device.
3. To start using, open your desired application or software on your device and tap the "play" function or simply tap the Bluetooth function on your Argent Smart Mirror.
4. To play the next auditory media, tap the right facing arrow.
5. To play the previous auditory media, tap the left facing arrow.
6. To turn Bluetooth off, hold the Bluetooth function.

Having fun while getting ready has never been easier.



Cleaning & Care

When Cleaning

1. Use warm water with a mild detergent.
2. Use a soft cloth so as not to scratch your Argent Smart Mirror.
3. Use gloves if required.
4. Avoid using
 - a. Powder
 - b. Pastes
 - c. Compound cleaners
 - d. Thinners / Solvents / White spirits
 - e. Window cleaners containing fine abrasives.
5. Non-abrasive window cleaning sprays may be used for mirror surface.



We at Argent aim to give you the best experience possible.

Customer Support

1300 364 748

support@customer-central.com.au

For more information, please visit our website

