

## ARGENT BATH FILLERS

### NOTES PRIOR TO INSTALLATION

1. INSPECT ALL PARTS PRIOR TO INSTALLATION FOR SUITABILITY AND/ OR DEFECTS
2. ANY SUSPECTED DEFECT SHOULD BE REPORTED AS SOON AS POSSIBLE
3. SHOULD ANY PRODUCT BE INSTALLED DESPITE A FAULT HAVING BEEN FOUND AND REPORTED, ARGENT WILL NOT ACCEPT LIABILITY FOR THE COST OF LABOUR TO REMOVE AND INSTALL ANY REPLACEMENT PRODUCT/S

### NOTES FOR INSTALLATION

1. PLEASE ENSURE PIPEWORK IS FLUSHED CLEAR OF DEBRIS BEFORE INSTALLING ROUGH IN BODY AND BATH FILLER.
2. INLET PRESSURE RANGE 100 – 500KPA
3. MAXIMUM HOT WATER TEMPERATURE 60 C
4. AS/NZS 3500 REQUIRES 500 KPA MAXIMUM OPERATING PRESSURE AT ANY OUTLET WITHIN A BUILDING
5. HOT & COLD INLETS SHOULD HAVE EQUALISED WATER PRESSURES.
6. NOT SUITABLE TO BE INSTALLED WITH A GRAVITY FEED SYSTEM

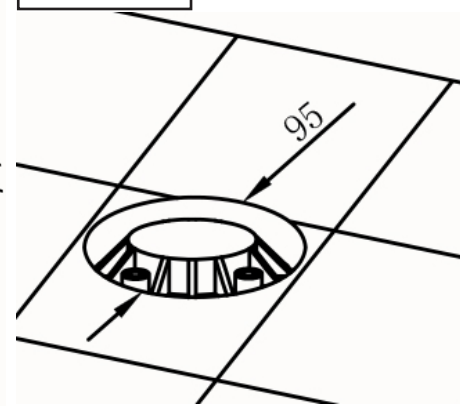
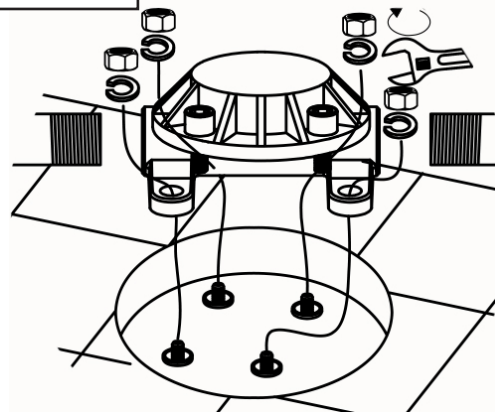
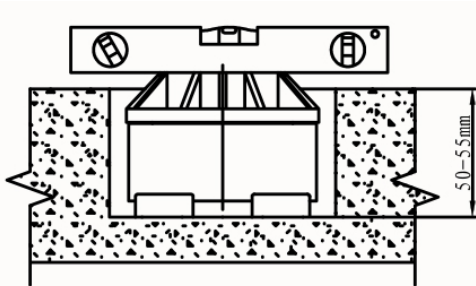


Please direct any feedback for this product to Customer Central:  
support@customer-central.com.au  
or call 1300 364 748

STEP 1

STEPS 2&3

STEPS 4&5



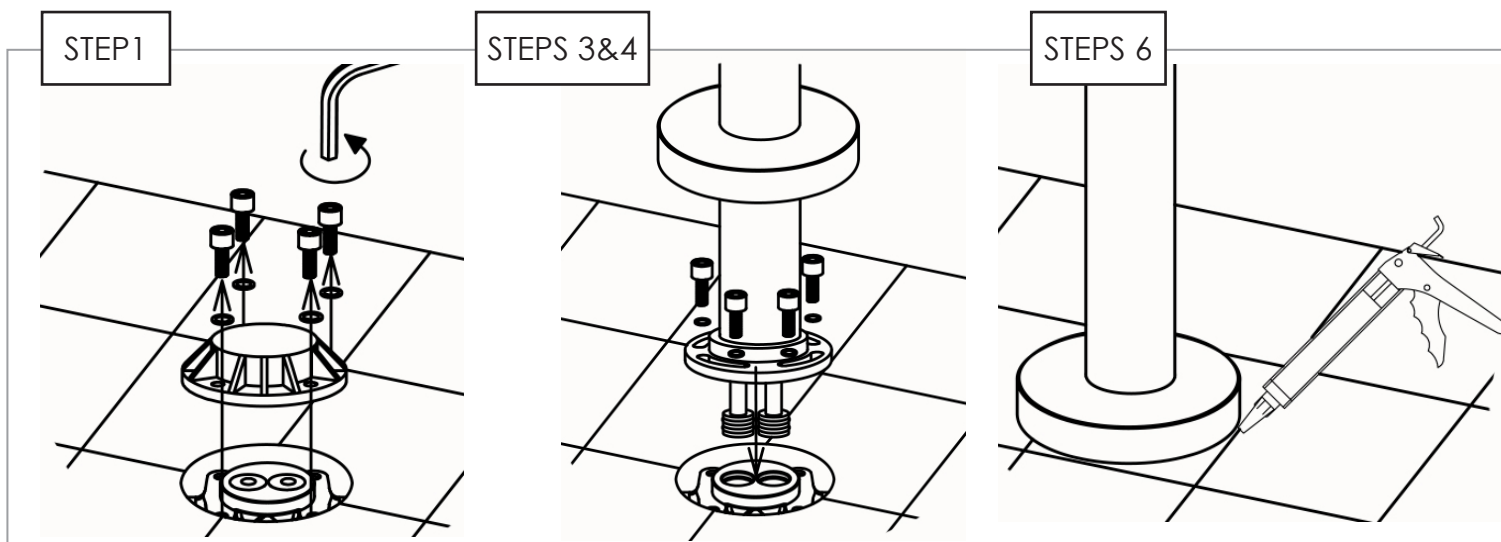
### IN FLOOR BODY ROUGH IN

1. For new installations, install the rough in body in the designated place so that the base is 50-55mm below the finished floor height. For retro fit installations, CHASE A CHANNEL IN THE FLOOR IN THE designated place for the ROUGH IN base. (50-55mm depth) Ensure that the plastic cover is installed level to the finished floor surface.
2. Connect the hot and cold water feed pipes using thread seal tape or equivalent. Red = Hot, Blue = Cold
3. Mark and secure the rough in body using all four fastening points, check that the rough in body is true and level when tightening the bolts. Use shims to level if required.
4. Leave the plastic blanking plate in place for wet seal test.
5. Ensure there is a 95mm clearance hole around the rough in body while backfilling or tiling the floor

### ARGENT BATH FILLERS

#### BATH FILLER FIT OFF

1. REMOVE THE PLASTIC BLANKING PLATE
2. Flush the lines to ensure there is no debris in the pipes
3. Install the Bath filler into the rough in body, ensuring that the hot and cold orientation is correct. Hot water line on the bath filler has a red O- ring on the bottom.
4. Tighten using the four grub screws that held the plastic blanking plate in place.
5. Wet Test the bath filler including the functions of the spout and the handpiece.
6. Place cover cap in position



#### NOTES TO THE INSTALLER/ END USER.

1. This bath filler uses a progressive diverter cartridge.
2. Move the lever clockwise to activate the bath filler spout, the further forward you rotate the lever the fast and warmer the water flows.
3. Move the lever counter clockwise to activate the shower, the further backwards you rotate the lever the fast and warmer the water flows.
4. TWISTING OR STRECHING THE SHOWER HOSE MAY RESULT IN FAILURE, AND WILL VOID THE WARRANTY.

#### CLEANING AND MAINTENANCE

1. THE SPECIAL CHROME FINISH ONLY REQUIRES CLEANING WITH MILD HOUSEHOLD DETERGENT AND DRY WITH A CLEAN COTTON CLOTH TO RETAIN ITS LUSTROUS SHINE.
2. AVOID CLEANING WITH ABRASIVE MATERIALS OR CLEANERS

#### PRODUCT CODES

<b>FM2963801</b>	Rough-in Body
<b>FM3493801</b>	FLOW Bath Filler
<b>FM3683801</b>	LOFT Bath Filler
<b>FM3693801</b>	KUBIC Bath Filler