

***Installer please leave this documentation for homeowner.**

Care for you stainless steel sink:

Do's

- Ensure your sink is rinsed thoroughly after each use. Regular cleaning will keep the stainless steel looking it's best.
- Use a dry, soft, absorbent cloth, dry your sink after use, preventing any mineral deposits in the water from building up on the surface of the sink.
- Using a glass cleaner on your sink can enhance your sinks shine.
- Ensure specialised stainless steel polishing creams are used to make scratches less noticeable.

Don'ts

- Don't leave fruits or juices on the sink. Wipe them immediately to avoid citric acid etching the surface.
- Don't leave harsh chemicals like chlorine/chloride on stainless steel surfaces.
- Don't leave soap, wet sponges or other cleaning pads on the surface of your sink. These items can dull and possibly pit the surface finish.
- Don't store chemicals like acid/chlorine/bleaches etc under stainless steel kitchen or laundry sinks. The fumes from these items may damage the sink from underneath.



AUSTRALIAN WARRANTY FOR DOMESTIC RESIDENTIAL USE:

Argent Australia Pty Ltd warrants that the following products will be free from defects in materials and workmanship, and, for the following periods from the date of purchase:

- Lifetime replacement warranty on Stainless Steel Sinks;
- 1 year replacement for Dishracks, Food Boards, Stainless Steel Strainer Trays or other Sink Accessories*.

*Plugs & Wastes are excluded from the warranty (as a wear and tear component).

Argent will rectify free of charge for parts any fault due to a defect in materials or workmanship appearing within the applicable warranty period subject to the conditions set out below.

EXCLUSIONS

This warranty is for normal domestic and commercial use only and does not cover:

- a defect that is caused by misuse, wear and tear, unclean environments, fire or accidental damage.
- a product that has been repaired or serviced by an unauthorized person.
- a product that was not installed in accordance with our instructions.
- a product that was not used, cleaned or cared for in accordance with our instructions
- a product that was used outdoors.

Full warranty statement available from customer central

Installation Option 1:

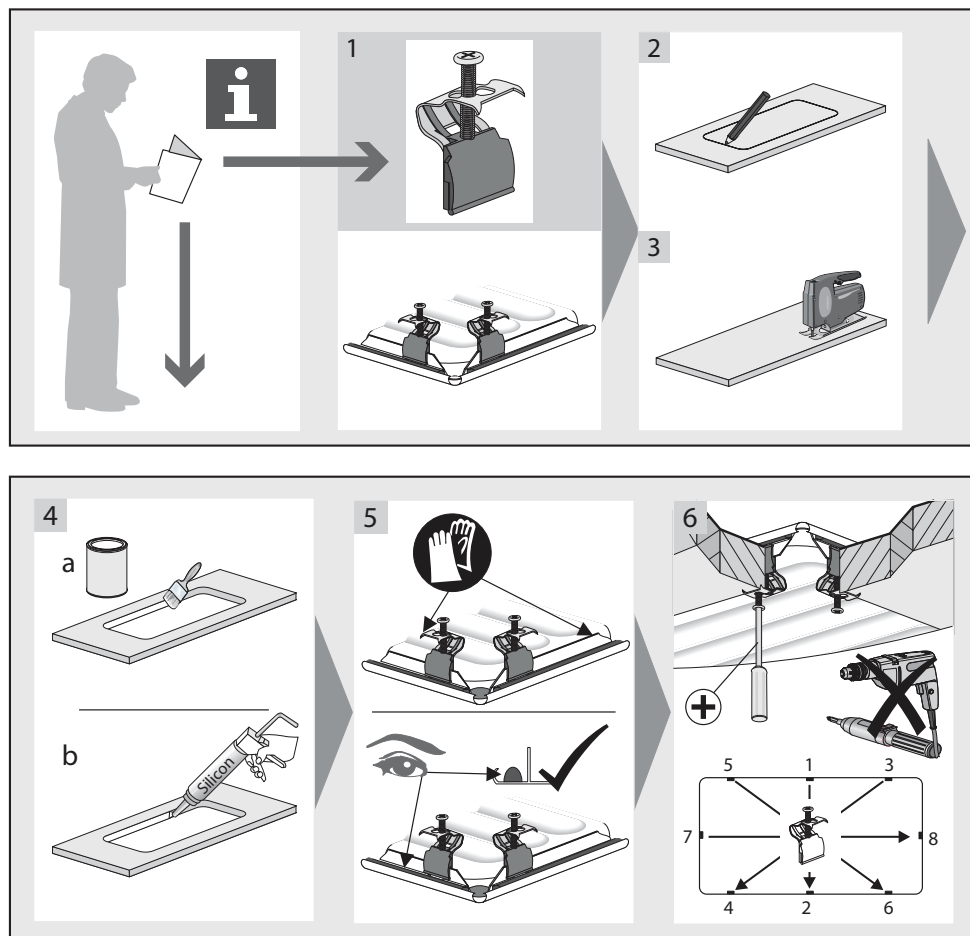


*Verve, Executive & Tempo Fastening

Instructions:

- Using the templates provided, measure bench for cut-out.
- Using the sink, ensure cut out is accurate.
- Clip inserts into slot on strap
- Fasten with screwdriver until locating foot holds firm on underside of bench.
- Ensure all clips used to pull sink down tightly.

Installation Option 2:



*Format and inset laundry fastening

Disclaimer Notice:

ALL TEMPLATES, LINE DRAWINGS & ELECTRONIC FILES ARE SUPPLIED AS A GUIDE ONLY. PLEASE CROSS CHECK WITH ACTUAL BOWL BEFORE COMMENCING ANY CUTOUT AND ENSURE RADII ARE SUITABLE TO BENCHTOP MATERIAL TOLERANCES. ARGENT AUSTRALIA ACCEPTS NO RESPONSIBILITY FOR CUTOUT ERRORS.



Argent Stainless Steel Sink Care & Install Guide