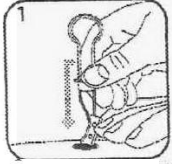


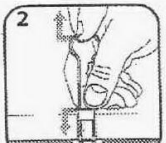


## Top-Fix Soft close seat installation procedure



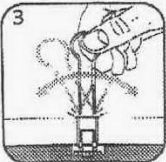
### Step 1.

Insert nylon toggles into the holes in the toilet pan



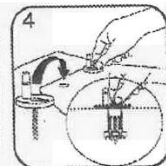
### Step 2.

Hold toggle by the loop at the top and push the plastic plate down onto the pan so that it is a secure fit.



### Step 3.

Break excess toggle material off by moving it backwards and forwards a few times.



### Step 4.

Attach toilet seat hinge posts to the pan; but do not tighten them as this stage.



### Step 5.

Test fit the seat to ensure it is a good fit on the pan & the hinge posts, remove the seat and tension the hinge posts so they are well fastened. ( i.e. They should be secure and not move)

### Step 6.

Place the hinge post cover plates in position and refit seat. Test that the soft close action is working.

Technical helpline – 1800 356 717