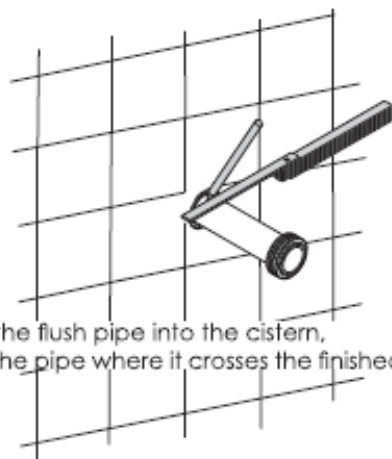
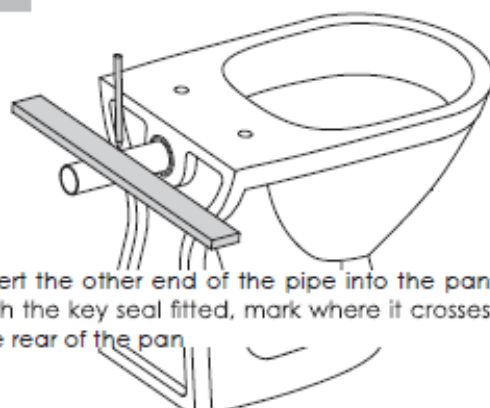


1



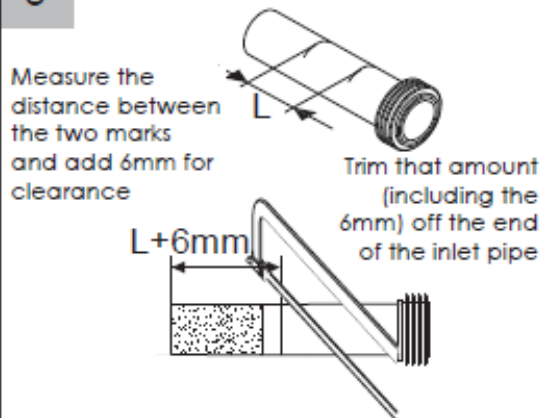
Insert the flush pipe into the cistern, mark the pipe where it crosses the finished wall

2



Insert the other end of the pipe into the pan with the key seal fitted, mark where it crosses the rear of the pan

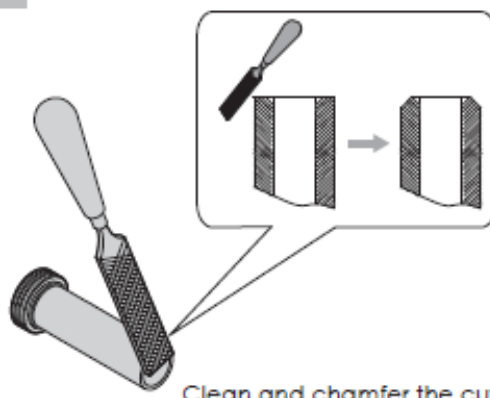
3



Measure the distance between the two marks and add 6mm for clearance

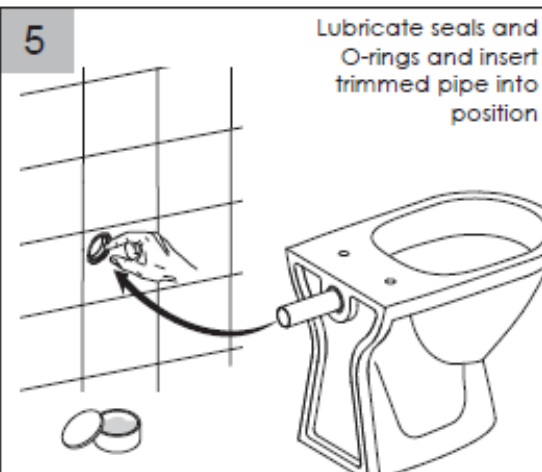
Trim that amount (including the 6mm) off the end of the inlet pipe

4



Clean and chamfer the cut

5



Lubricate seals and O-rings and insert trimmed pipe into position

6



ensure pan is installed true and level