



# **Bette Whirlpool**

## **Installation Instructions**

[www.argentaust.com.au](http://www.argentaust.com.au)



## CONTENTS

Important Notes .....	2
Preliminary Fit.....	2
Electrical Supply .....	2
Access & Framing.....	3
Testing & Sheeting .....	4
Need Any Help.....	4
Operating Instructions .....	4-6
Cleaning & Care Instructions.....	6
Trouble Shooting Guide.....	7
Warranty .....	8

## 1. Important Notes

Please take a little time to read these installation instructions before proceeding. Your whirlpool has been factory tested and checked; therefore it is imperative that you reinspect it within 24 hours of delivery, for any imperfections or damage, paying particular attention to the edges and pipework, prior to commencing this installation.

If you find anything of concern, please advise the retailer immediately, as no claim for imperfections or damage will be accepted after installation.

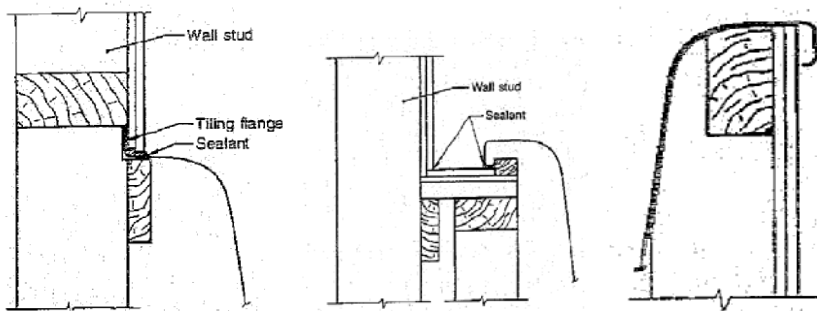
### Lifting:

**When moving the whirlpool, it should only be lifted by the edge of the bath or the steel frame, do not lift by pumps or piping.** The producer assumes no liability for damage resulting from incorrect transporting or incorrect lifting and handling.

## 2. Preliminary Fit

Check the whirlpool's condition, clear the area where the whirlpool is going to be installed by removing any unwanted material including dust, cement remnants, etc, as this will prevent damage to the system from the induction of debris.

Position the whirlpool where it is to be installed. Use a spirit level on the top edges to make sure everything is perfectly horizontal. The height adjustable feet allow for easy adjustment of the horizontal alignment, additional whirlpool support fixing must be provided around the perimeter, as per the example below, in compliance with local regulator standards to comply to Building Standards AS/NZ 2023. **A minimum height of 180mm from bottom of the whirlpool to floor level is required to allow for the waste fittings.**



Check that all feet are standing firmly on the ground, and adjust as required.

## 3. Electrical Supply

**The 3 pin plug will need to be reattached by an electrician; this was deliberately removed after factory testing to ensure this unit is retested on site by a suitably qualified person prior to connecting to the power supply.**

All electrical equipment, including the reattachment of the 3 pin electrical plug to the whirlpool, should be performed by a qualified person to the National Regulatory authority requirements.

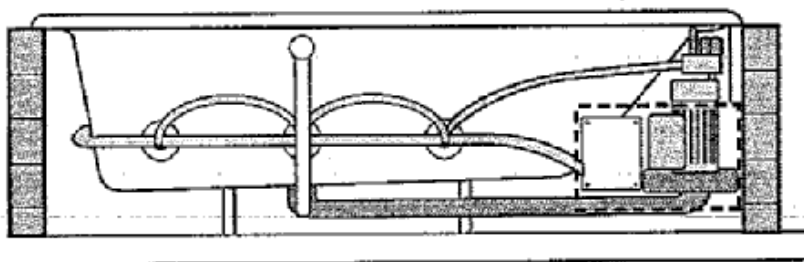
**If a heater has been specified, this system will require 15 amp power connections, to be installed by an electrician.**

The whirlpool control box has been factory sealed; any evidence of tampering with this item will void the warranty.

## 4. Access & Framing

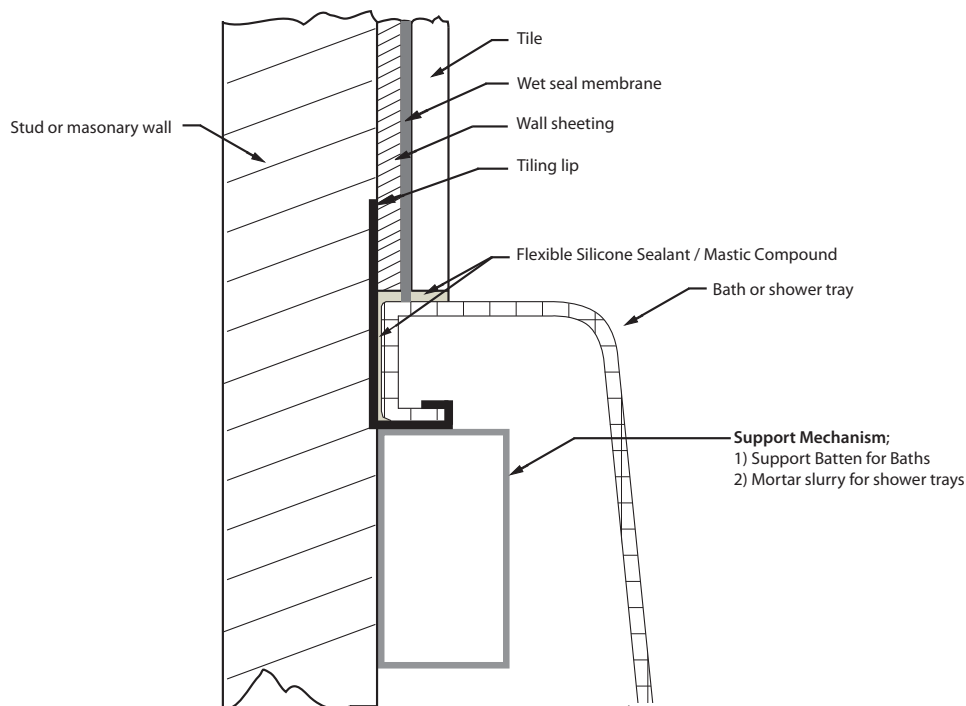
The pumps and technical systems of the whirlpool must remain accessible via an access panel, (one has been supplied with this whirlpool, which will allow for a variable access panel sizing of up to 400mm high x 1000mm wide, the maximum weight of the completed access panel should not exceed 12 kg's).

This access panel must be completely removable. Minimum recommended size of access panel should be 300mm high x 450mm wide and positioned in a location that allows for access to and/or removal of all components and pumps. Whirlpools with heaters will need additional access opening to allow for service on the heater if required. The access panel system allows you to tailor the opening to any tile sizing, allowing for a much more discrete access. No Access Panel = No Warranty Service



*Typical Minimum Access requirement*

**Tiling Lip** - Where any of the edges of the whirlpool are in an alcove or will form part of or join the walls, the plastic tiling bead supplied should be adhered to these edges using a suitable wet area silicon sealant. Where the tiling bead forms a corner, this should be cut at a 45 degree angle. See diagram.

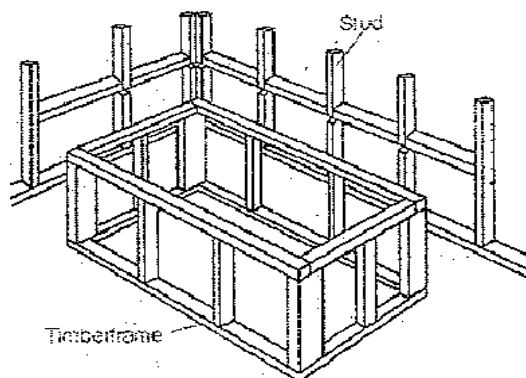


Complete the supporting framework of the whirlpool including allowance for the access panel system. **Do not sheet up yet!**

Once you have completed the framework to the approved standard, with the whirlpool fitted to its final position, the waste fitting can now be connected to the plumbing discharge/waste pipe.

### Note:

When framing up, please be aware of the fact that the control pads and various other fittings may protrude below the rim of the whirlpool and care should be taken to avoid damage or constriction of these fittings.



*Typical Framing Detail*

## 5. Testing & Sheeting

**IMPORTANT: SURGE GUARD PROTECTION IS STRONGLY RECOMMENDED FOR USE WITH ALL WHIRLPOOL SYSTEMS**

Although the whirlpool was fully tested in the factory prior to dispatch, damage may have occurred during transport or installation. Therefore the following procedures should be carried out now;

- Check to make sure the electrician has tested the whirlpool and connected the 3 pin power plug to the whirlpool system (This will have been removed after testing by the factory)
- Check that the whirlpool is clean and free of debris.
- Fill the bath with water above the level of the jets.
- Switch on the system (see **Operating Instructions Step 7, pages 5-8**)
- Now check all functions are working.
- Check all water seals for possible leaks.
- Allow the whirlpool to run for 10 minutes.
- Check again for leaks, (check pipes, joints, coupling and jets)

Once you have completed these checks, sheeting with villa board or similar approved wet area product can be performed. Remember to install and allow for access panel fittings when sheeting up.

An approved wet seal membrane will need to be applied after sheeting has occurred and prior to tiling proceeding in accordance with the approved standard.

Once tiling and grouting have been completed, apply a bead of approved silicon based sealant to the edges of the bath where it meets the tiles.



## 6. Need any Help

Ring Argent Technical advice hotline if required, **Toll Free on 1800 356 717.**

If taking advantage of this service, please have your warranty number detail, which is located on the control box and will start with the following prefix PMFG, prior to ringing to allow our team to assist you as efficiently as possible.

## 7. Operating Instructions

Your whirlpool is made from the highest quality steel with a unique glazed finish and it has a hard smooth surface, it features a German whirlpool system that enhances the hydrotherapy power of water.

This whirlpool has the following standard features,

- 1) Titanium based steel shell (30 year warranty)
- 2) Safety suction (prevents getting stuck on the waste suction)
- 3) Corrosion resistant galvanised base frame with adjustable feet
- 4) Low level water sensor (pump will not start without water)
- 5) German operating system and pumps (1 year warranty)
- 6) Rigorous electrical and function testing prior to dispatch
- 7) Integral waste/overflow/suction system
- 8) Combination of Midi and Micro jets, directionally adjustable
- 9) Power matched pump to jet system
- 10) Air induced Venturis

## Operating Instructions continued...

This whirlpool may also have the following optional features;

- 1) Diode LED light
- 2) Sanitising system/ Aromatherapy dispenser
- 3) 15Amp in line heater

### Please Note:

- This product is not intended for use by persons with reduced physical, sensory or mental capacities, or lack of experience or knowledge, unless they have been given supervision or instruction concerning the use of this whirlpool by a person responsible for their safety.
- People who have difficulty walking or have another handicap must be extra careful when getting in and out!
- Children should be supervised to ensure their safety and that they do not play with the whirlpool fittings and controls.
- Please observe the cleaning and care instructions on page 7.
- Whirlpool pump will not start if the water level sensor is not covered by water.

Fill the bath to 50mm above the highest jet; please remember that once you get in the whirlpool, water displacement will increase the water level. You may choose to decrease your initial water level to allow for this displacement; also this will allow you to save water. Importantly, the system will not start until the low level water sensor is covered.

### **Make sure the power is connected/turned on at the main supply**

Depending on the whirlpool system you have selected, you will have either one or two control buttons on the rim of your whirlpool.

### **Main Control Pad, On/Off Button, Light switch**

Every Bette whirlpool has this control switch, it has two key pad features, the On/Off pad and the Light control pad.

#### On/Off Button



- 1<sup>st</sup> Press – Pump starts and runs continuously
- 2<sup>nd</sup> Press – this shuts the system down.



#### Light Switch



This function is only active if you have specified the 256 diode LED light with your whirlpool.

- 1<sup>st</sup> Press – Light will cascade through the myriad of colour combinations offered by the LED light.
- 2<sup>nd</sup> Press – Light will remain assigned to white light.
- 3<sup>rd</sup> Press – Light switches off.

### Air Venturi's

Air Venturi's are the additional chrome control(s) located just below the rim of the Bette Whirlpool. Opening the air venturis allows for the induction of air into the water via the jets. This has the simultaneous benefit of both softening the water and increasing the massaging effect.



Simply turn the air venturi control anti clockwise to open. You may have up to 3 of these, depending on the amount of jets you have on your whirlpool, see the chart below.

10 jet Bette whirlpool	4 midi jets + 6 micro jets	2 air venturi
18 jet Bette whirlpool	6 midi jets + 12 micro jets	3 air venturi
26 jet Bette whirlpool	26 micro jets	4 air venturi

Each air venturi will operate different banks of jets to allow you to customise your whirlpool experience.

## Operating Instructions continued...

### Additional Control Pad, Sanitising system

If you have ordered the optional sanitising system/bath product dispenser, you will have an additional control pad and a chrome filling closure included beside each other on the top of your Bette whirlpool rim. (Pictured here)  
The function on the RHS of this pad is used to activate the sanitising feature.

The function on the LHS indicates when the dispenser needs refilling and the LED light will light up.

The storage filling closure is top filling and will hold up to 1.5litres of product.



#### To operate

Press the RHS button on the control pad for 8 seconds and the liquid contained in the dispenser will be dispersed with the pump running for 30 seconds, and then the pump will shut down. This will disperse approximately 1ml of product to each litre of water. (This will amount to about 100ml in 30 seconds)

Leave the sanitised water solution in the whirlpool for 30 minutes, then empty and rinse the whirlpool. You can choose to run the pump for some of this time; however, air venturis should be in the off position to prevent excessive foaming of the sanitising agent.

The sanitising function has a dry running protection sensor that prevents the system from operating should there be no product in the reservoir.

#### Cleaning frequency

Your whirlpool should be sanitised regularly, and the amount of times you initiate this is relative to how often you are using the whirlpool, notwithstanding, this should happen no less than once a year even if you have not used the whirlpool.

## 8. Cleaning & Care Instructions

With the correct care and proper treatment, you will enjoy your whirlpool for a long time. Your whirlpool can be cleaned easily and without significant effort if the following techniques are employed.

Wipe your whirlpool down after use with a moistened soft cloth or chamois, if there is a residue, you can additionally use mild detergent (dish washing liquid or mild soap) to assist in the removal of any residue.

For lime deposits, remove these deposits with a vinegar solution diluted with water (Ratio 1: 1).

Chrome plated fittings can also be cleaned with mild detergent and a soft cloth, polish with a dry soft cloth afterwards.

For whirlpools without the optional sanitising system, the inside of the jets can be cleaned by using a small bottle brush. The jets are directionally adjustable and non-removable.

#### Important Care and cleaning detail:

Relative to cleaning product, Check the manufacturer's instructions and warning notes before using any type of cleaner on your whirlpool.

Use only soft cloths, sponges or chamois to clean the surface, under no circumstances should scrubbing brushes/ sponges, steel wool or any tools be used.

Do Not Use any scouring or aggressive and or rough cleaning agents. Chlorine based disinfectants and aggressive cleaners (EG acetone, thinners etc) may attack and or bleach the fittings or enamelled surface.

## 9. Trouble Shooting Guide

SITUATION	ACTION	ALTERNATIVE	RESULT
Whirlpool won't start	1) Check to make sure that the power is connected and turned on. 2) is water level 50mm above the highest jet	1) Use an appliance that you know works and plug it in to the power point to check the power supply. 2) fill water level above highest jet	1 & 2) Still won't start, ring the Technical advice hotline
No air, just water coming out of jets	Page 6, turn air venturis anti clock wise to open.	Different air venturis operate different banks of jets, check all air venturis are open	Still no air coming out of jets, ring the Technical advice hotline
Sanitising system does not start.	Page 7, Check that there is product in the reservoir	Check that indicator light is on advising that there is power to the unit	Still won't start, ring the Technical advice hotline
Light will not turn on	Check to make sure that the power is connected and turned on.	Light will not turn on until whirlpool has water above the low level sensor	Still won't start, ring the Technical advice hotline
No access panel	Contact your builder/ installer as there was a kit supplied with your whirlpool.	Access panel may not be initially obvious due to its discreet nature	Contact builder/ installer as it is their responsibility to facilitate this access. <b>No access panel = No service</b>



## 10. Warranty

PURCHASE NOTES	
Bath Model	
Purchase Date	
Retailer	
Invoice Number	
Additional Notes	

### WARRANTY SUMMARY

- Bette enamelled bath shell is covered by a 30 year guarantee for manufacturer's defects.
- Baths must be inspected within 48 hours of delivery for visible signs of transport damage or visible faults.
- The guarantee on enamelled bath shell covers faults outside of tolerances set down in Australian Standards AS2023.
- Waste overflow connections are covered by a 2 year guarantee.
- Whirlpool pump/blowers/switches and pipe systems are covered by a 1 year guarantee.
- Consequently, damage and the cost of building in removal of products are not covered by the product guarantee.
- To receive a full warranty statement please contact Argent Australia.



For more information contact the Argent Central Technical Advice Hotline 1800 356 787

Ph: 1300 365 748

Fx: 1300 656 057

[ac@argentaust.com.au](mailto:ac@argentaust.com.au)

[www.argentaust.com.au](http://www.argentaust.com.au)