

ARGENT PWD SHOWER SEAT 960 X 400 | SE04-01

NOTES PRIOR TO INSTALLATION

- 960 mm x 400 mm x 480 mm folding shower seat
- Complies with the minimum design, strength and dimension requirements of AS 1428.1-2009
- Maximum load 160 Kg
- Mount seat 470 mm to 480 mm above finished floor level
- Fabricated from 304 stainless steel
- Approved SS fixings should be used into solid substrate.



MUST BE FITTED TO A SOLID WALL OR OTHER FIRM SURFACE.

For fixing to timber, use only approved stainless steel fixings. For fixing to brickwork, block work or concrete, use the fastening with wall plugs or equivalent as approved to 1428.1.

INSTALLATION

ACCESSIBLE

Install seat as per AS 1428.1 Design for Access and Mobility.

When in the horizontal position ensure seat does not present a hazard and the grab rail is accessible.

POSITIONING

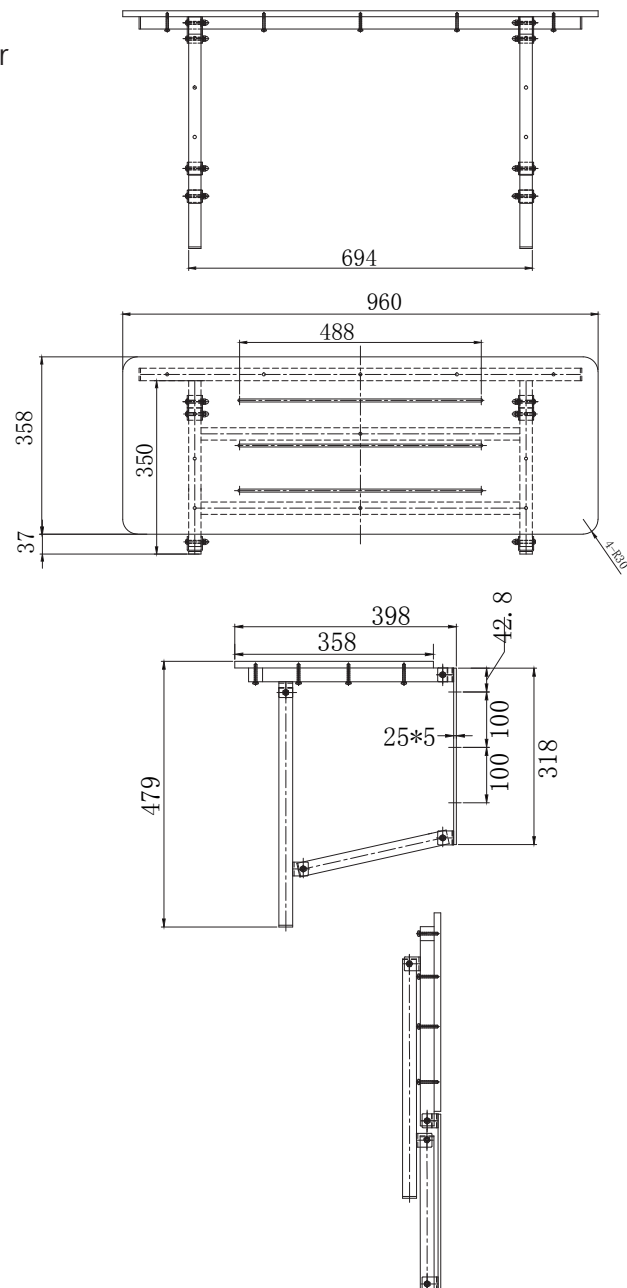
In the horizontal position, level check and spot mark wall through seat frame mount holes.

FIXING

Screw wall mount to wall with stainless steel screws. Note: On stud wall, make sure wall mount is fixed into studwork and noggins. For masonry walls, use wall plugs supplied or equivalent.

CHECKING

Check seat is firmly secured to wall



Please direct any feedback for this product to Customer Central:
support@customer-central.com.au
or call 1300 364 748