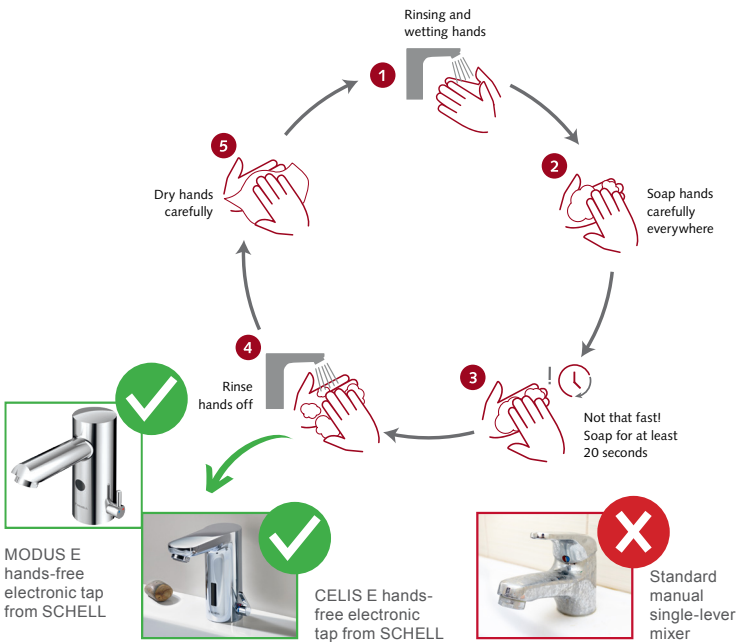


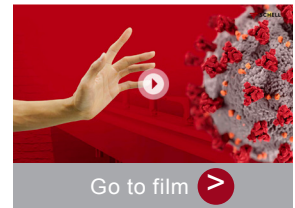
## Know your transmission cycles!

Manual single-lever mixers pose a serious risk for the transmission of bacteria and viruses, and especially in heavily used public sanitary facilities: even after correct hand washing, the lever still has to be touched. This starts the transmission cycle!



### SCHELL's solution

Hands-free electronic taps offer protection against the transmission of bacteria and viruses. No contact with the tap is needed while hands are being washed. It's important that hands are washed using the proper procedure. You can provide support here: With the SCHELL SSC Bluetooth® module, the tap can be programmed so that the follow-up time enables a 30-second "washing session", for example, so as to improve hand hygiene. If you want to know the right way to wash hands, you can also watch the SCHELL film "A handy way to stop infection".



Go to film >

## Breaking the cycle of infection – and keeping it that way!

With the widespread introduction of working from home and the closure of public buildings such as schools, government offices, restaurants, etc., water volumes in their drinking water systems are not being replaced as they should be. This can lead to the spread of Legionella, for example, and – in the worst case –, could cause serious illness even once the threat of the corona pandemic has passed by.

### SCHELL's solution

Installing electronic SCHELL fittings not only ensures good levels of hygiene on the part of consumers: thanks to SCHELL's easy-to-use programming, the stagnation flushes needed to maintain drinking water quality are also easy to execute via SCHELL or SSC. Find out more here:



Go to SSC website >

Do you have questions about installation or our products?

Your local dealer or SCHELL representative will be very happy to help with your enquiry:

ARGENT AUSTRALIA PTY LTD | 1300 364 748 | support@customer-central.com.au