

Kitchen Mixer



DE Montageanleitung

EN Installation Instructions

ES Instrucciones de montaje


FR Instructions de montage

IT Istruzioni di montaggio

NL Montage-instructie

PL Instrukcja montażu

ZH 装配说明

	TVK11981050061	Architectura Pin Single-lever kitchen mixer without dish washer valve
--	----------------	---

Notes prior to installation

1. Inspect all parts prior to installation for suitability and/or defects.
2. Any suspected defect should be reported as soon as possible.
3. Should any product be installed despite a fault having been found and reported, Argent will not accept liability for the cost of labour to remove and install any replacement product/s.



Notes for installation

1. Please ensure pipework is clear of debris by flushing lines prior to installation.
2. We recommend hot and cold water isolation stops are used – not included in supply.

Pressure and temperature requirements

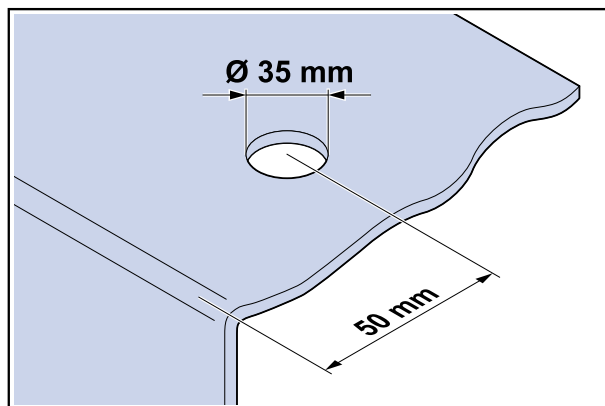
1. Inlet pressure range: 100 - 500 kPa
2. Maximum hot water temperature: 60 °C
3. AS/NZS 3500 requires 500 kPa maximum operating pressure at any outlet within a building.
4. Hot & cold inlets should have equalised water pressures.

Notes to the installer

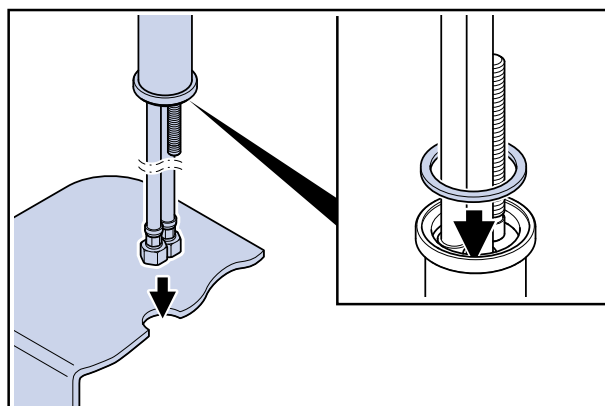
- Twisting or stretching the flexible hoses during installation may result in failure, and will void the warranty.
- Avoid severe bends in the flexible hoses as this may result in failure and will void the warranty.

Cleaning and maintenance

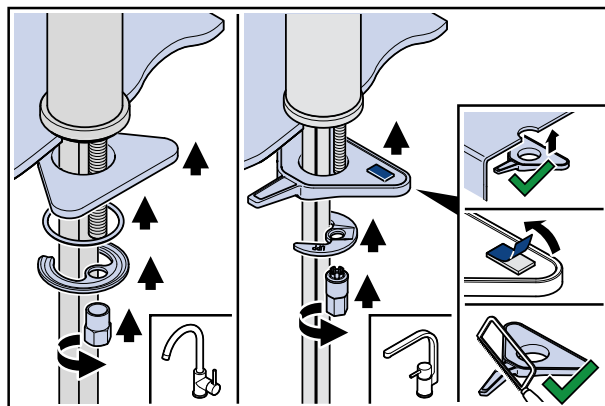
- The special chrome finish only requires cleaning with mild household detergent and drying with a clean cotton cloth to retain its lustrous shine.
- Avoid cleaning with abrasive materials or cleaners.



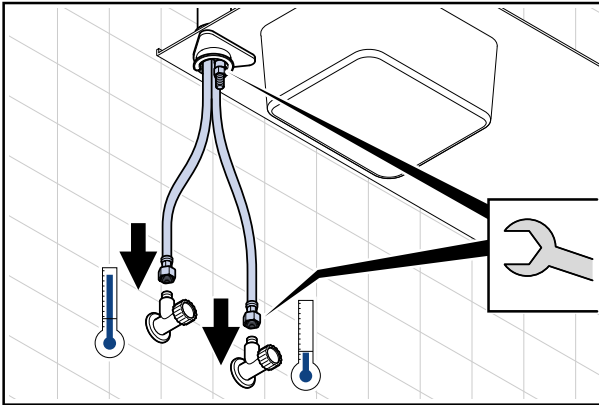
Where the mixer is going into a stone or laminate top, cut a 35mm Ø hole.



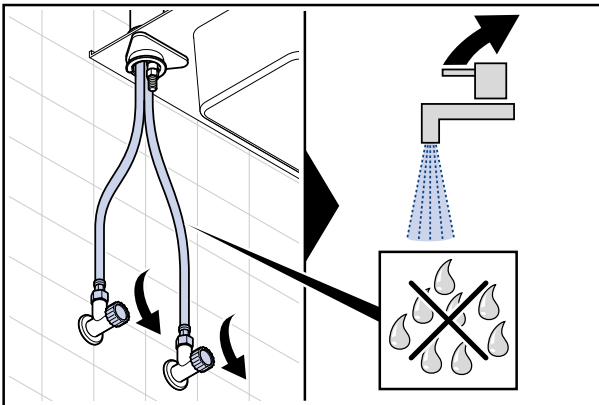
Feed the two hoses through the hole in the sink or bench top.



Fit the rubber gasket, holder and fixing plate assembly into position under the sink/bench top. The holder is not required for solid bench tops. Tighten the nut assembly and then tension the screws.



Make sure the hoses are connected to the correct hot and cold water feed.



Open the stop valves (not included in scope of supply), flush the lines, then close the mixer lever and check there are no leakages.

