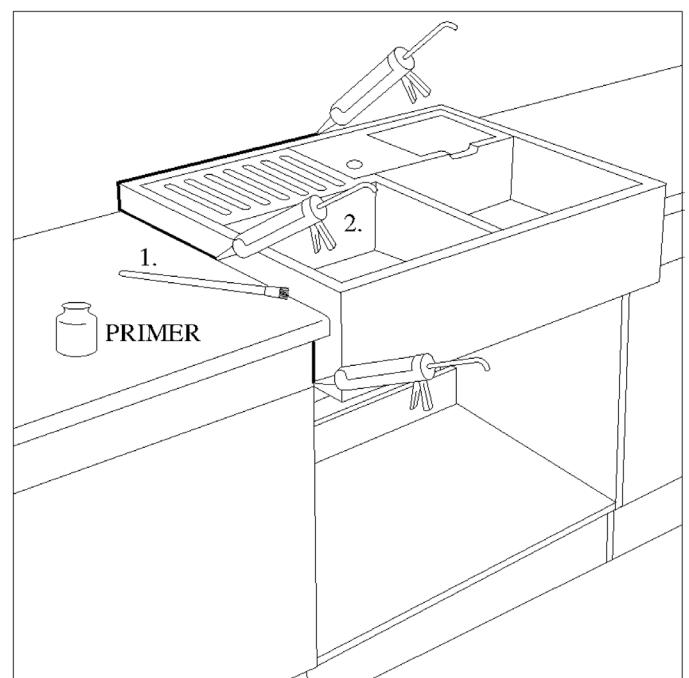
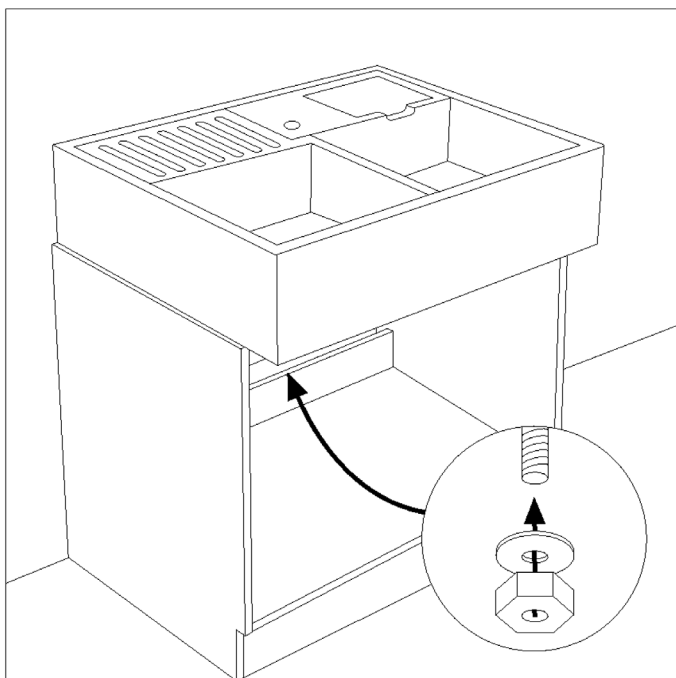
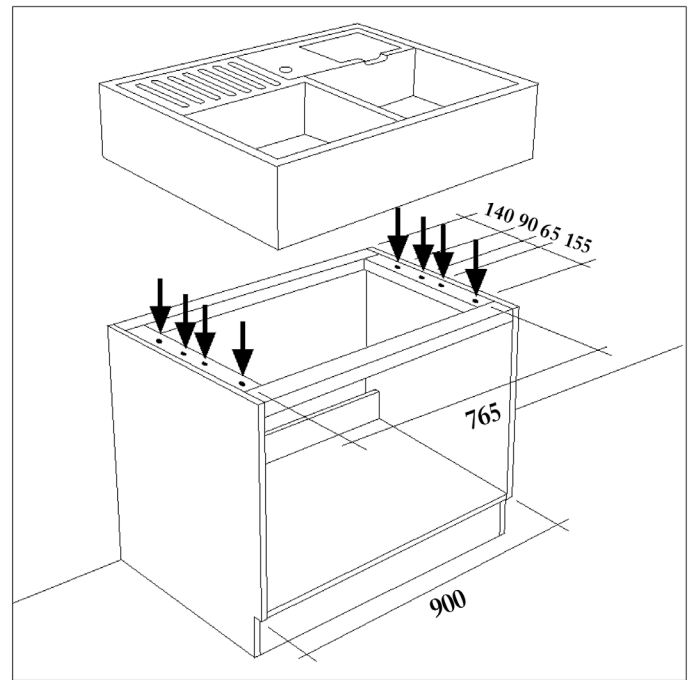
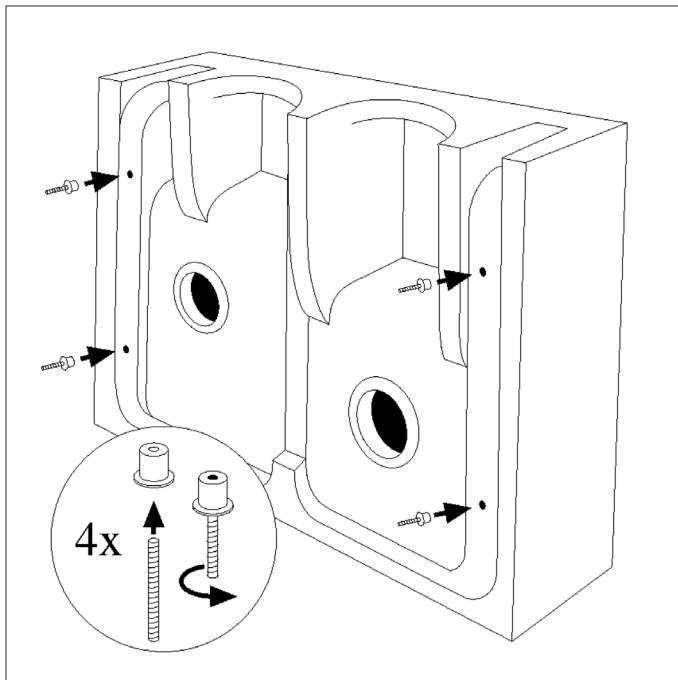


# Villeroy & Boch 6323 Butler Double Sink

## INSTALLATION INSTRUCTIONS

1. Use of epoxies on Villeroy & Boch ceramic sinks will void manufacturer's warranty.
2. Tap holes required should be nominated at time of ordering for factory drilling and no attempt to punch them should be made, as any damage is not covered by warranty. Order forms for tap holes available on [www.argentaust.com.au](http://www.argentaust.com.au).
3. Rear of Villeroy & Boch Butler Sink is unglazed - ensure sink is adequately installed to avoid exposure of the back of the sink.
4. If installing stone over the sink, ensure stone and sink are supported independently of each other.



## Villeroy & Boch 6323 Butler Double Sink

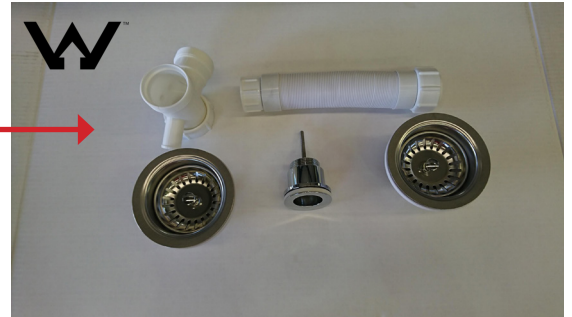
### INSTALLATION INSTRUCTIONS

#### 8963239C Waste Kit includes:

- 2 x C150000189 – 90 mm Designer wastes
- 1 x 40mm Waste set (For colander)
- 1 x bypass connection kit

#### Not Included:

- S & P trap connection
- Extended Double Bowl Connector
- Silicone



1. Install 90mm wastes – Using silicone to seal the waste.



2. Install 40mm Waste Set in colander section – Using silicone to seal the waste.



## Villeroy & Boch 6323 Butler Double Sink INSTALLATION INSTRUCTIONS

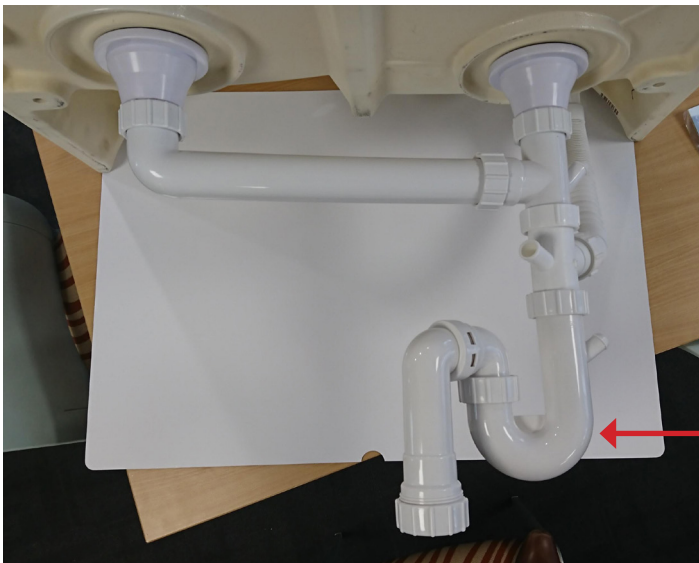
3. Connect double bowl connector (Extended size required – not supplied)



4. Connect Bypass to 40mm colander waste



5. Connect S & P trap (Not supplied)



### Insinkerator Notes:

Recommended to only use Insinkerator models equipped with anti vibration technology (Evolution 100 & 200 Models) – Must use Insinkerator Double Bowl connector for any double bowl connections.