
Avia 2.0 Wall Mounted Basin Mixer



Notes prior to installation

1. Inspect all parts prior to installation for suitability and/ or defects.
2. Any suspected defect should be reported as soon as possible.
3. Should any product be installed despite a fault having been found and reported, argent will not accept liability for the cost of labour to remove and install any replacement product/s.
4. This product complies with the requirement of Lead-Free standards as defined in the National Construction Code Volume 3 and is suitable for use as part of Lead-Free installation.



Notes for installation

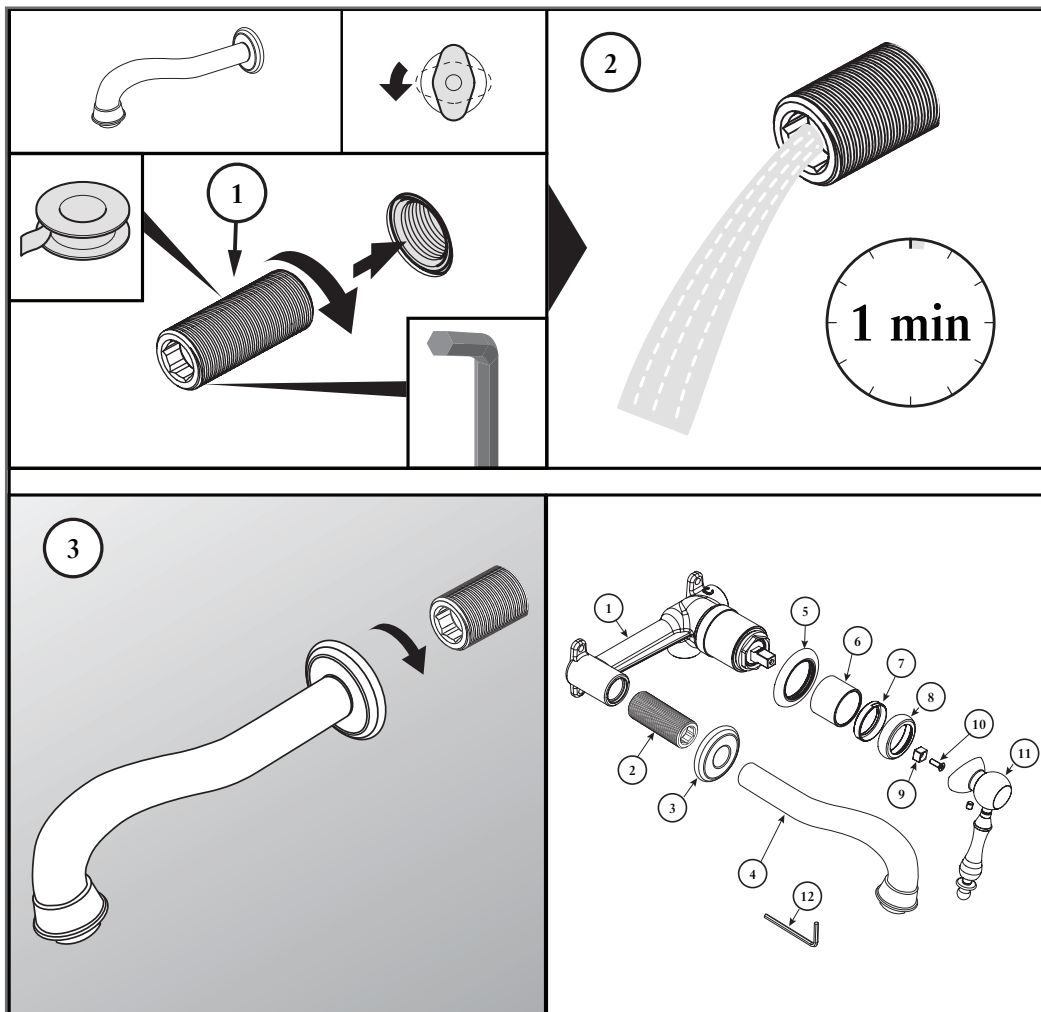
1. Please ensure pipework is clear of debris by flushing lines prior to installation.

Pressure and temperature requirements

1. Inlet pressure range 100 - 500 kPa.
2. Maximum hot water temperature 60 °C.
3. AS/NZS 3500 requires 500 kPa maximum operating pressure at any outlet within a building.
4. Hot & Cold inlets should have equalised water pressures.

Cleaning and maintenance

- Use a soft cloth (e.g. microfibre) with warm water or a mild liquid soap and water to wipe the surface clean. Immediately wipe dry with a soft cloth. Do not use undue pressure when wiping.
- Never use harsh chemical detergents, solvents or acidic cleaners, limescale remover, household vinegar or abrasive cleaning agents for cleaning.
- Never use abrasive cloths, sponges and scouring pads, as they may scratch or damage the finish.
- Personal hygiene products (e.g. toothpaste, shampoo, shower gel, etc.) can damage the finish of your product and should be cleaned off immediately.

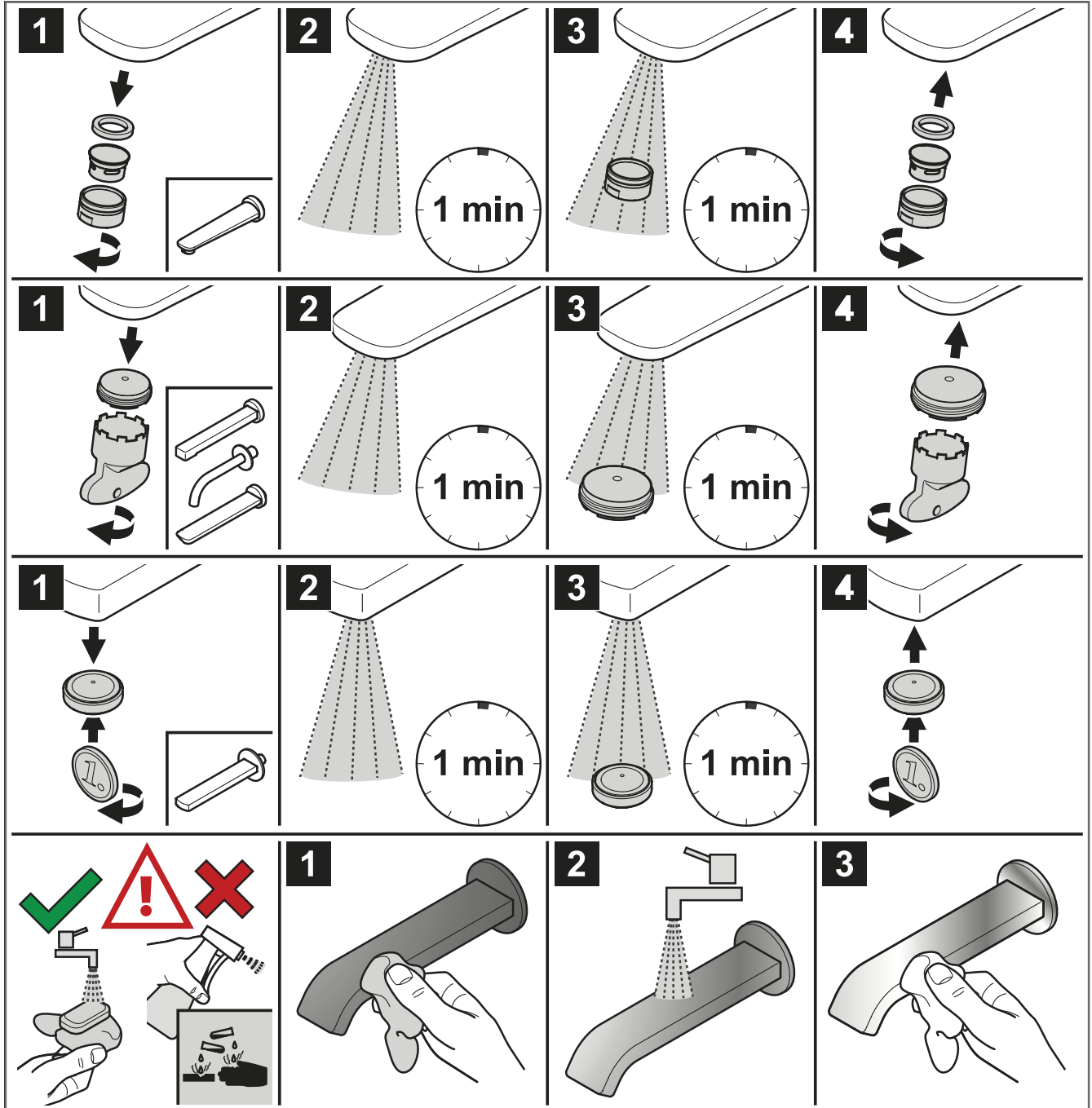


1. Apply thread tape to ½ inch spout adapter (1).
2. Remove spout installation plug from the installed body and screw in ½ inch spout adapter.
3. Flush the line prior to installing spout to ensure pipework is clear of debris (2).
4. Push spout cover plate (4) onto back of spout and then screw the spout onto the ½ inch spout adapter (3). Care must be taken that thread tape cannot become dislodged and block the aerator causing reduction in water flow.
5. Remove the plastic tiling cover from mixer body, make sure the external surface of mixer body is clean of any sealant/adhesives/grout etc.
6. Install cartridge stem extension (9) onto the cartridge and secure with supplied screw (10).
7. Install colour matched removable sleeve (6) onto the mixer body
8. Slide the cover plate (5) over the mixer body removable sleeve.
9. Push the cover plate so it sits against the wall
10. IMPORTANT: Install brass thread nut (7) onto cartridge using smaller internal thread.
11. Fit colour matched lever (11) onto cartridge stem and lock into place by tightening grub screw using 2.5mm allen key (12).
12. Thread decorative cover dome (8) over the lever and connect onto exposed thread.



Villeroy & Boch

1748





Argent Australia
L1/22 Arthur Street, Foritude Valley QLD 4006
1300 364 748
www.argentaust.com.au



Villeroy & Boch AG
Postfach 12 30-66689 Mettlach, Germany
Tel: +49 (0) 6864816000
www.villeroy-boch.com

Please Direct any feedback for this product to Customer Central:
support@customer-central.com.au or call 1300 364 748

The manufacturer reserves the right to make alterations without notice.
